



# DPF2 rabbit pAb

Cat No.:ES2196

For research use only

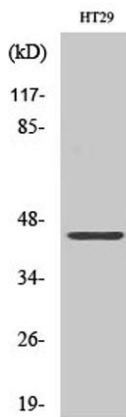
## Overview

<b>Product Name</b>	DPF2 rabbit pAb
<b>Host species</b>	Rabbit
<b>Applications</b>	WB;IHC;IF;ELISA
<b>Species Cross-Reactivity</b>	Human;Mouse
<b>Recommended dilutions</b>	Western Blot: 1/500 - 1/2000. Immunohistochemistry: 1/100 - 1/300. Immunofluorescence: 1/200 - 1/1000. ELISA: 1/10000. Not yet tested in other applications.
<b>Immunogen</b>	The antiserum was produced against synthesized peptide derived from human REQU. AA range:151-200
<b>Specificity</b>	DPF2 Polyclonal Antibody detects endogenous levels of DPF2 protein.
<b>Formulation</b>	Liquid in PBS containing 50% glycerol, 0.5% BSA and 0.02% sodium azide.
<b>Storage</b>	Store at -20°C. Avoid repeated freeze-thaw cycles.
<b>Protein Name</b>	Zinc finger protein ubi-d4
<b>Gene Name</b>	DPF2
<b>Cellular localization</b>	Nucleus . Cytoplasm .
<b>Purification</b>	The antibody was affinity-purified from rabbit antiserum by affinity-chromatography using epitope-specific immunogen.
<b>Clonality</b>	Polyclonal
<b>Concentration</b>	1 mg/ml
<b>Observed band</b>	44kD
<b>Human Gene ID</b>	5977
<b>Human Swiss-Prot Number</b>	Q92785
<b>Alternative Names</b>	DPF2; BAF45D; REQ; UBID4; Zinc finger protein ubi-d4; Apoptosis response zinc finger protein; BRG1-associated factor 45D; BAF45D; D4; zinc and double PHD fingers family 2; Protein requiem
<b>Background</b>	The protein encoded by this gene is a member of the d4 domain family, characterized by a zinc

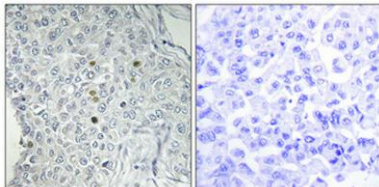




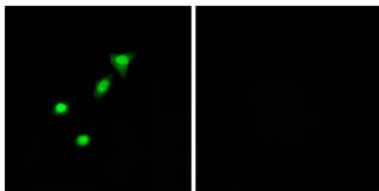
finger-like structural motif. This protein functions as a transcription factor which is necessary for the apoptotic response following deprivation of survival factors. It likely serves a regulatory role in rapid hematopoietic cell growth and turnover. This gene is considered a candidate gene for multiple endocrine neoplasia type I, an inherited cancer syndrome involving multiple parathyroid, enteropancreatic, and pituitary tumors. [provided by RefSeq, Jul 2008],



Western Blot analysis of various cells using DPF2 Polyclonal Antibody



Immunohistochemical analysis of paraffin-embedded Human breast cancer. Antibody was diluted at 1:100(4° overnight). High-pressure and temperature Tris-EDTA,pH8.0 was used for antigen retrieval. Negative control (right) obtained from antibody was pre-absorbed by immunogen peptide.

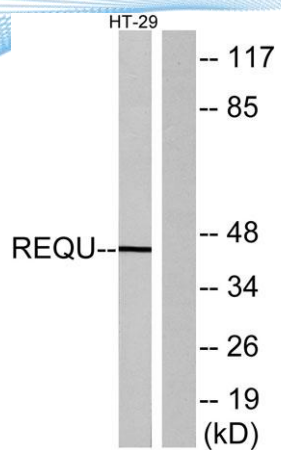


Immunofluorescence analysis of A549 cells, using REQU Antibody. The picture on the right is blocked with the synthesized peptide.





**ELK Biotechnology**



Western blot analysis of lysates from HT-29 cells, using  
REQU Antibody. The lane on the right is blocked with the  
synthesized peptide.



+86-27-59760950

[ELKbio@ELKbiotech.com](mailto:ELKbio@ELKbiotech.com)

[www.elkbiotech.com](http://www.elkbiotech.com)

23-2, No.388 Gaoxin 2nd Road,Wuhan East Lake Hi-tech Development Zone, Hubei , P.R.C