



Dnmt3b rabbit pAb

Cat No.:ES2189

For research use only

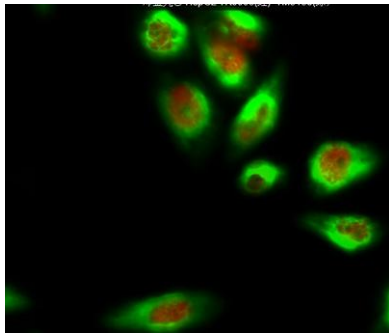
Overview

Product Name	Dnmt3b rabbit pAb
Host species	Rabbit
Applications	WB;IHC;IF;ELISA
Species Cross-Reactivity	Human;Chicken(testedbyyourcustomer)
Recommended dilutions	Western Blot: 1/500 - 1/2000. Immunohistochemistry: 1/100 - 1/300. Immunofluorescence: 1/200 - 1/1000. ELISA: 1/20000. Not yet tested in other applications.
Immunogen	The antiserum was produced against synthesized peptide derived from human DNMT3B. AA range:1-50
Specificity	Dnmt3b Polyclonal Antibody detects endogenous levels of Dnmt3b protein.
Formulation	Liquid in PBS containing 50% glycerol, 0.5% BSA and 0.02% sodium azide.
Storage	Store at -20°C. Avoid repeated freeze-thaw cycles.
Protein Name	DNA (cytosine-5)-methyltransferase 3B
Gene Name	DNMT3B
Cellular localization	Nucleus .
Purification	The antibody was affinity-purified from rabbit antiserum by affinity-chromatography using epitope-specific immunogen.
Clonality	Polyclonal
Concentration	1 mg/ml
Observed band	96kD
Human Gene ID	1789
Human Swiss-Prot Number	Q9UBC3
Alternative Names	DNMT3B; DNA (cytosine-5)-methyltransferase 3B; Dnmt3b; DNA methyltransferase HsallIB; DNA MTase HsallIB; M.HsallIB
Background	CpG methylation is an epigenetic modification that is important for embryonic development, imprinting, and X-chromosome inactivation. Studies

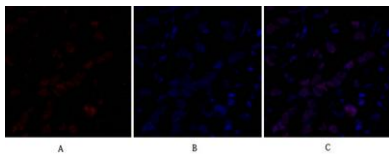




in mice have demonstrated that DNA methylation is required for mammalian development. This gene encodes a DNA methyltransferase which is thought to function in de novo methylation, rather than maintenance methylation. The protein localizes primarily to the nucleus and its expression is developmentally regulated. Mutations in this gene cause the immunodeficiency-centromeric instability-facial anomalies (ICF) syndrome. Eight alternatively spliced transcript variants have been described. The full length sequences of variants 4 and 5 have not been determined. [provided by RefSeq, May 2011],



Immunofluorescence analysis of HeLa cell. 1, Dnmt3b Polyclonal Antibody (red) was diluted at 1:200 (4° overnight). Bcl-2 Monoclonal Antibody (6B5) (green) was diluted at 1:200 (4° overnight). 2, Goat Anti Rabbit Alexa Fluor 594 Catalog: RS3611 was diluted at 1:1

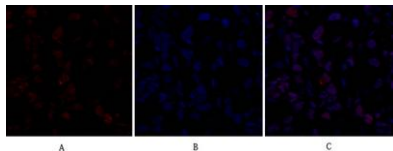


Immunofluorescence analysis of human-breast-cancer tissue. 1, Dnmt3b Polyclonal Antibody (red) was diluted at 1:200 (4°C, overnight). 2, Cy3 labeled Secondary antibody was diluted at 1:300 (room temperature, 50 min). 3, Picture B: DAPI (blue) 10 min. Picture A: Target. Picture C: merge of A+B





Immunofluorescence analysis of human-breast-cancer tissue. 1,Dnmt3b Polyclonal Antibody(red) was diluted at 1:200(4°C,overnight). 2, Cy3 labeled Secondary antibody was diluted at 1:300(room temperature, 50min).3, Picture B: DAPI(blue) 10min. Picture A:Targ



Immunofluorescence analysis of human-liver-cancer tissue. 1,Dnmt3b Polyclonal Antibody(red) was diluted at 1:200(4°C,overnight). 2, Cy3 labeled Secondary antibody was diluted at 1:300(room temperature, 50min).3, Picture B: DAPI(blue) 10min. Picture A:Target. Picture B: DAPI. Picture C: merge of A+B

