



# DNA pol $\alpha$ rabbit pAb

Cat No.:ES2184

For research use only

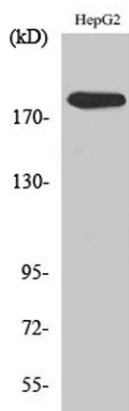
## Overview

<b>Product Name</b>	DNA pol $\alpha$ rabbit pAb
<b>Host species</b>	Rabbit
<b>Applications</b>	WB;ELISA
<b>Species Cross-Reactivity</b>	Human;Rat;Mouse;
<b>Recommended dilutions</b>	Western Blot: 1/500 - 1/2000. ELISA: 1/20000. Not yet tested in other applications.
<b>Immunogen</b>	The antiserum was produced against synthesized peptide derived from human DNA Polymerase alpha. AA range:81-130
<b>Specificity</b>	DNA pol $\alpha$ Polyclonal Antibody detects endogenous levels of DNA pol $\alpha$ protein.
<b>Formulation</b>	Liquid in PBS containing 50% glycerol, 0.5% BSA and 0.02% sodium azide.
<b>Storage</b>	Store at $-20^{\circ}\text{C}$ . Avoid repeated freeze-thaw cycles.
<b>Protein Name</b>	DNA polymerase alpha catalytic subunit
<b>Gene Name</b>	POLA1
<b>Cellular localization</b>	Nucleus . Cytoplasm, cytosol . In the cytosol, colocalizes with RNA:DNA hybrids with a speckled pattern. .
<b>Purification</b>	The antibody was affinity-purified from rabbit antiserum by affinity-chromatography using epitope-specific immunogen.
<b>Clonality</b>	Polyclonal
<b>Concentration</b>	1 mg/ml
<b>Observed band</b>	165kD
<b>Human Gene ID</b>	5422
<b>Human Swiss-Prot Number</b>	P09884
<b>Alternative Names</b>	POLA1; POLA; DNA polymerase alpha catalytic subunit; DNA polymerase alpha catalytic subunit p180
<b>Background</b>	This gene encodes the catalytic subunit of DNA polymerase, which together with a regulatory and two primase subunits, forms the DNA polymerase

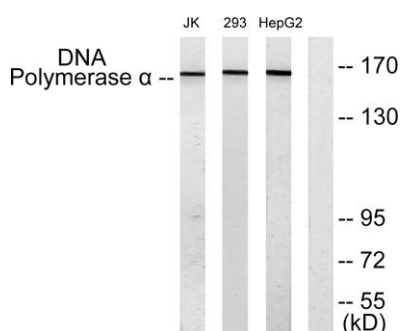




alpha complex. The catalytic subunit plays an essential role in the initiation of DNA replication. [provided by RefSeq, Mar 2010],



Western Blot analysis of various cells using DNA pol  $\alpha$  Polyclonal Antibody diluted at 1:1000



Western blot analysis of lysates from HepG2, 293, and Jurkat cells, using DNA Polymerase alpha Antibody. The lane on the right is blocked with the synthesized peptide.

