



D-GPCR rabbit pAb

Cat No.:ES2167

For research use only

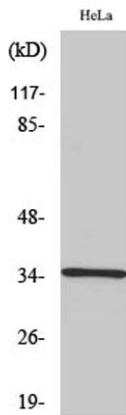
Overview

Product Name	D-GPCR rabbit pAb
Host species	Rabbit
Applications	WB;IF;ELISA
Species Cross-Reactivity	Human;Rat;Mouse;
Recommended dilutions	Western Blot: 1/500 - 1/2000. Immunofluorescence: 1/200 - 1/1000. ELISA: 1/20000. Not yet tested in other applications.
Immunogen	The antiserum was produced against synthesized peptide derived from human OR51E1. AA range:241-290
Specificity	D-GPCR Polyclonal Antibody detects endogenous levels of D-GPCR protein.
Formulation	Liquid in PBS containing 50% glycerol, 0.5% BSA and 0.02% sodium azide.
Storage	Store at -20°C. Avoid repeated freeze-thaw cycles.
Protein Name	Olfactory receptor 51E1
Gene Name	OR51E1
Cellular localization	Cell membrane ; Multi-pass membrane protein .
Purification	The antibody was affinity-purified from rabbit antiserum by affinity-chromatography using epitope-specific immunogen.
Clonality	Polyclonal
Concentration	1 mg/ml
Observed band	35kD
Human Gene ID	143503
Human Swiss-Prot Number	Q8TCB6
Alternative Names	OR51E1; GPR164; OR51E1P; OR52A3P; POGR; PSGR2; Olfactory receptor 51E1; D-GPCR; G-protein coupled receptor 164; Olfactory receptor 52A3; Prostate-overexpressed G protein-coupled receptor; Prostate-specific G protein-coupled receptor 2
Background	Olfactory receptors interact with odorant molecules in the nose, to initiate a neuronal response that



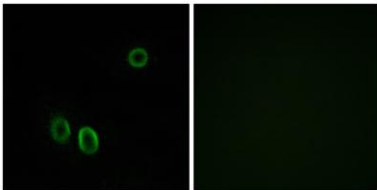


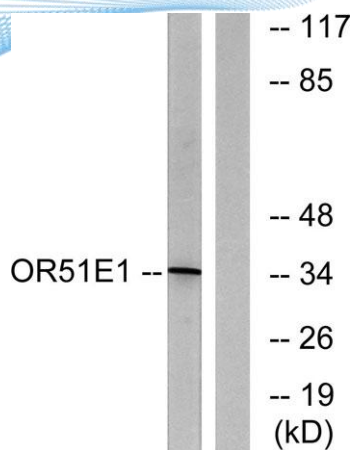
triggers the perception of a smell. The olfactory receptor proteins are members of a large family of G-protein-coupled receptors (GPCR) arising from single coding-exon genes. Olfactory receptors share a 7-transmembrane domain structure with many neurotransmitter and hormone receptors and are responsible for the recognition and G protein-mediated transduction of odorant signals. The olfactory receptor gene family is the largest in the genome. The nomenclature assigned to the olfactory receptor genes and proteins for this organism is independent of other organisms. [provided by RefSeq, Jul 2008],



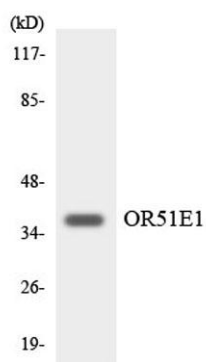
Western Blot analysis of various cells using D-GPCR Polyclonal Antibody

Immunofluorescence analysis of A549 cells, using OR51E1 Antibody. The picture on the right is blocked with the synthesized peptide.





Western blot analysis of lysates from HeLa cells, using OR51E1 Antibody. The lane on the right is blocked with the synthesized peptide.



Western blot analysis of the lysates from K562 cells using OR51E1 antibody.

