



DGK- ι rabbit pAb

Cat No.:ES2166

For research use only

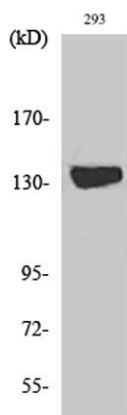
Overview

Product Name	DGK- ι rabbit pAb
Host species	Rabbit
Applications	WB;IHC;IF;ELISA
Species Cross-Reactivity	Human;Rat
Recommended dilutions	Western Blot: 1/500 - 1/2000. Immunohistochemistry: 1/100 - 1/300. Immunofluorescence: 1/200 - 1/1000. ELISA: 1/20000. Not yet tested in other applications.
Immunogen	The antiserum was produced against synthesized peptide derived from human DGKI. AA range:991-1040
Specificity	DGK- ι Polyclonal Antibody detects endogenous levels of DGK- ι protein.
Formulation	Liquid in PBS containing 50% glycerol, 0.5% BSA and 0.02% sodium azide.
Storage	Store at -20°C. Avoid repeated freeze-thaw cycles.
Protein Name	Diacylglycerol kinase iota
Gene Name	DGKI
Cellular localization	Cell projection, axon . Cell projection, dendrite . Cell junction, synapse, presynapse . Cell junction, synapse, postsynapse . Cell junction, synapse, postsynaptic density . Cell junction, synapse, synaptic cell membrane . Cytoplasmic vesicle, secretory vesicle, synaptic vesicle membrane . Cytoplasm, cytosol . Nucleus . Excluded from inhibitory synapses (By similarity). Localization between cytoplasm and nucleus is regulated by protein kinase C (PubMed:9830018). Both in the detergent soluble and particulate fractions (By similarity). .
Purification	The antibody was affinity-purified from rabbit antiserum by affinity-chromatography using epitope-specific immunogen.



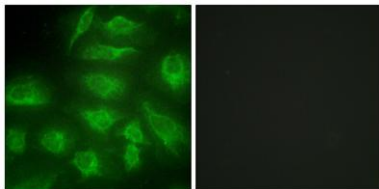


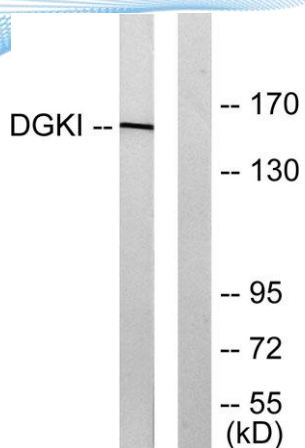
Clonality	Polyclonal
Concentration	1 mg/ml
Observed band	160kD
Human Gene ID	9162
Human Swiss-Prot Number	O75912
Alternative Names	DGKI; Diacylglycerol kinase iota; DAG kinase iota; Diglyceride kinase iota; DGK-iota
Background	This gene is a member of the type IV diacylglycerol kinase subfamily. Diacylglycerol kinases regulate the intracellular concentration of diacylglycerol through its phosphorylation, producing phosphatidic acid. The specific role of the enzyme encoded by this gene is undetermined, however, it may play a crucial role in the production of phosphatidic acid in the retina or in recessive forms of retinal degeneration. [provided by RefSeq, Jul 2008],



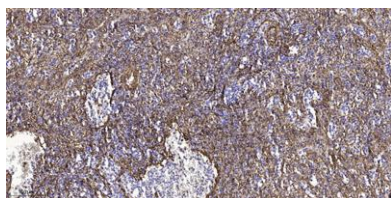
Western Blot analysis of various cells using DGK- ι Polyclonal Antibody diluted at 1:1000

Immunofluorescence analysis of HeLa cells, using DGKI Antibody. The picture on the right is blocked with the synthesized peptide.





Western blot analysis of lysates from 293 cells, using DGKI Antibody. The lane on the right is blocked with the synthesized peptide.



Immunohistochemical analysis of paraffin-embedded human spleen tissue. 1,primary Antibody was diluted at 1:200(4° overnight). 2, Sodium citrate pH 6.0 was used for antigen retrieval(>98°C,20min). 3,Secondary antibody was diluted at 1:200

