



DDX52 rabbit pAb

Cat No.:ES2157

For research use only

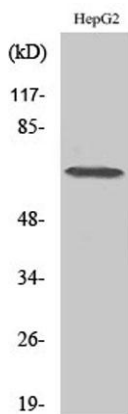
Overview

Product Name	DDX52 rabbit pAb
Host species	Rabbit
Applications	WB;IHC;IF;ELISA
Species Cross-Reactivity	Human;Rat;Mouse;
Recommended dilutions	Western Blot: 1/500 - 1/2000. Immunohistochemistry: 1/100 - 1/300. ELISA: 1/40000. Not yet tested in other applications.
Immunogen	The antiserum was produced against synthesized peptide derived from human DDX52. AA range:550-599
Specificity	DDX52 Polyclonal Antibody detects endogenous levels of DDX52 protein.
Formulation	Liquid in PBS containing 50% glycerol, 0.5% BSA and 0.02% sodium azide.
Storage	Store at -20°C. Avoid repeated freeze-thaw cycles.
Protein Name	Probable ATP-dependent RNA helicase DDX52
Gene Name	DDX52
Cellular localization	Nucleus, nucleolus .
Purification	The antibody was affinity-purified from rabbit antiserum by affinity-chromatography using epitope-specific immunogen.
Clonality	Polyclonal
Concentration	1 mg/ml
Observed band	67kD
Human Gene ID	11056
Human Swiss-Prot Number	Q9Y2R4
Alternative Names	DDX52; ROK1; HUSSY-19; Probable ATP-dependent RNA helicase DDX52; ATP-dependent RNA helicase ROK1-like; DEAD box protein 52
Background	caution:The sequence shown here is derived from an Ensembl automatic analysis pipeline and should be considered as preliminary data.,PTM:Phosphorylated upon DNA damage,

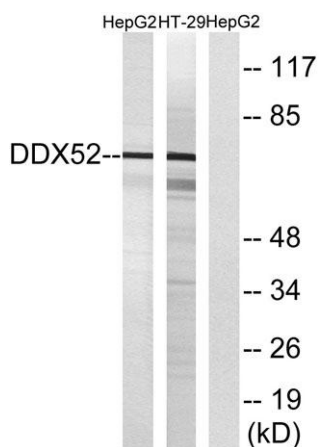




probably by ATM or ATR.,sequence caution:Several sequencing problems.,similarity:Belongs to the DEAD box helicase family. DDX52/ROK1 subfamily.,similarity:Contains 1 helicase ATP-binding domain.,similarity:Contains 1 helicase C-terminal domain.,



Western Blot analysis of various cells using DDX52 Polyclonal Antibody diluted at 1:500 cells nucleus extracted by Minute TM Cytoplasmic and Nuclear Fractionation kit (SC-003, Inventbiotech, MN, USA).



Western blot analysis of lysates from HepG2 and HT-29 cells, using DDX52 Antibody. The lane on the right is blocked with the synthesized peptide.



Immunohistochemical analysis of paraffin-embedded human brain. 1, Tris-EDTA, pH9.0 was used for antigen retrieval. 2 Antibody was diluted at 1:200(4° overnight).3, Secondary antibody was diluted at 1:200(room temperature, 45min).

