



DBP rabbit pAb

Cat No.:ES2149

For research use only

Overview

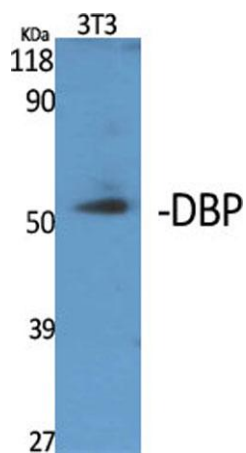
| | |
|---------------------------------|---|
| Product Name | DBP rabbit pAb |
| Host species | Rabbit |
| Applications | WB;ELISA |
| Species Cross-Reactivity | Human;Monkey |
| Recommended dilutions | Western Blot: 1/500 - 1/2000. ELISA: 1/40000. Not yet tested in other applications. |
| Immunogen | Synthesized peptide derived from DBP . at AA range: 90-170 |
| Specificity | DBP Polyclonal Antibody detects endogenous levels of DBP protein. |
| Formulation | Liquid in PBS containing 50% glycerol, 0.5% BSA and 0.02% sodium azide. |
| Storage | Store at -20°C. Avoid repeated freeze-thaw cycles. |
| Protein Name | Vitamin D-binding protein |
| Gene Name | GC |
| Cellular localization | Secreted . |
| Purification | The antibody was affinity-purified from rabbit antiserum by affinity-chromatography using epitope-specific immunogen. |
| Clonality | Polyclonal |
| Concentration | 1 mg/ml |
| Observed band | 55kD |
| Human Gene ID | 2638 |
| Human Swiss-Prot Number | P02774 |
| Alternative Names | GC; Vitamin D-binding protein; DBP; VDB; Gc-globulin; Group-specific component |
| Background | The protein encoded by this gene belongs to the albumin gene family. It is a multifunctional protein found in plasma, ascitic fluid, cerebrospinal fluid and on the surface of many cell types. It binds to vitamin D and its plasma metabolites and transports them to target tissues. Alternatively spliced transcript variants encoding different isoforms have been |





found for this gene.[provided by RefSeq, Feb 2011],

Western Blot analysis of various cells using DBP Polyclonal Antibody



Western Blot analysis of COS7 cells using DBP Polyclonal Antibody

