



# CysLTR1 rabbit pAb

Cat No.:ES2115

For research use only

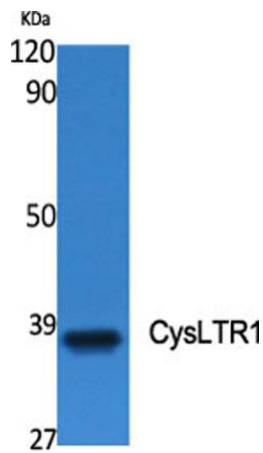
## Overview

<b>Product Name</b>	CysLTR1 rabbit pAb
<b>Host species</b>	Rabbit
<b>Applications</b>	WB;IF;ELISA
<b>Species Cross-Reactivity</b>	Human;Rat;Mouse;
<b>Recommended dilutions</b>	Western Blot: 1/500 - 1/2000. Immunofluorescence: 1/200 - 1/1000. ELISA: 1/5000. Not yet tested in other applications.
<b>Immunogen</b>	The antiserum was produced against synthesized peptide derived from human CYSLTR1. AA range:131-180
<b>Specificity</b>	CysLTR1 Polyclonal Antibody detects endogenous levels of CysLTR1 protein.
<b>Formulation</b>	Liquid in PBS containing 50% glycerol, 0.5% BSA and 0.02% sodium azide.
<b>Storage</b>	Store at -20°C. Avoid repeated freeze-thaw cycles.
<b>Protein Name</b>	Cysteinyl leukotriene receptor 1
<b>Gene Name</b>	CYSLTR1
<b>Cellular localization</b>	Cell membrane; Multi-pass membrane protein.
<b>Purification</b>	The antibody was affinity-purified from rabbit antiserum by affinity-chromatography using epitope-specific immunogen.
<b>Clonality</b>	Polyclonal
<b>Concentration</b>	1 mg/ml
<b>Observed band</b>	38kD
<b>Human Gene ID</b>	10800
<b>Human Swiss-Prot Number</b>	Q9Y271
<b>Alternative Names</b>	CYSLTR1; CYSLT1; Cysteinyl leukotriene receptor 1; CysLTR1; Cysteinyl leukotriene D4 receptor; LTD4 receptor; G-protein coupled receptor HG55; HMTMF81
<b>Background</b>	This gene encodes a member of the G-protein coupled receptor 1 family. The encoded protein is a receptor for cysteinyl leukotrienes, and is involved in

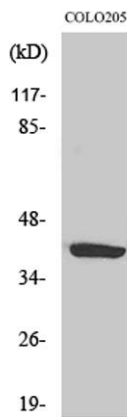




mediating bronchoconstriction via activation of a phosphatidylinositol-calcium second messenger system. Activation of the encoded receptor results in contraction and proliferation of bronchial smooth muscle cells, eosinophil migration, and damage to the mucus layer in the lung. Upregulation of this gene is associated with asthma and dysregulation may also be implicated in cancer. Alternative splicing results in multiple transcript variants. [provided by RefSeq, Aug 2013],



Western Blot analysis of various cells using CysLTR1 Polyclonal Antibody



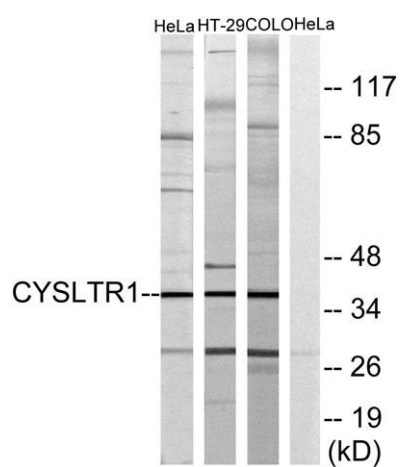
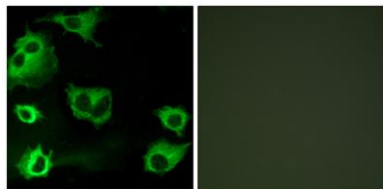
Western Blot analysis of HeLa cells using CysLTR1 Polyclonal Antibody





**ELK Biotechnology**

Immunofluorescence analysis of COS7 cells, using CYSLTR1 Antibody. The picture on the right is blocked with the synthesized peptide.



Western blot analysis of lysates from COLO205, HT-29, and HeLa cells, using CYSLTR1 Antibody. The lane on the right is blocked with the synthesized peptide.



+86-27-59760950

[ELKbio@ELKbiotech.com](mailto:ELKbio@ELKbiotech.com)

[www.elkbiotech.com](http://www.elkbiotech.com)

23-2, No.388 Gaoxin 2nd Road, Wuhan East Lake Hi-tech Development Zone, Hubei, P.R.C