



CYP4Z1/2 rabbit pAb

Cat No.:ES2113

For research use only

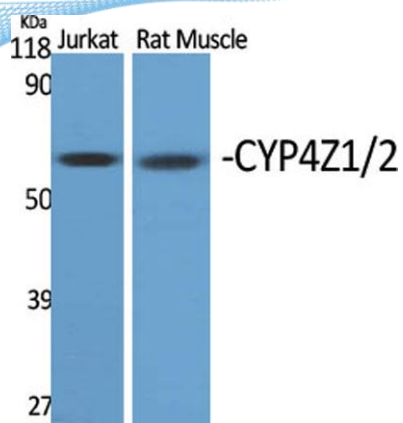
Overview

Product Name	CYP4Z1/2 rabbit pAb
Host species	Rabbit
Applications	WB;IHC;IF;ELISA
Species Cross-Reactivity	Human;Rat;Mouse;
Recommended dilutions	Immunohistochemistry: 1/100 - 1/300. ELISA: 1/40000. Not yet tested in other applications.
Immunogen	Synthesized peptide derived from the Internal region of human CYP4Z1/2.
Specificity	CYP4Z1/2 Polyclonal Antibody detects endogenous levels of CYP4Z1/2 protein.
Formulation	Liquid in PBS containing 50% glycerol, 0.5% BSA and 0.02% sodium azide.
Storage	Store at -20°C. Avoid repeated freeze-thaw cycles.
Protein Name	Cytochrome P450 4Z1/Putative cytochrome P450 family member 4Z2
Gene Name	CYP4Z1/CYP4Z2P
Cellular localization	
Purification	The antibody was affinity-purified from rabbit antiserum by affinity-chromatography using epitope-specific immunogen.
Clonality	Polyclonal
Concentration	1 mg/ml
Observed band	
Human Gene ID	199974
Human Swiss-Prot Number	Q5VVE4/Q8N1L4
Alternative Names	
Background	catalytic activity:RH + reduced flavoprotein + O(2) = ROH + oxidized flavoprotein + H(2)O.,cofactor:Heme group.,similarity:Belongs to the cytochrome P450 family.,tissue specificity:Preferentially detected in breast carcinoma tissue and mammary gland, whereas only marginal expression is found in all other tested tissues.,



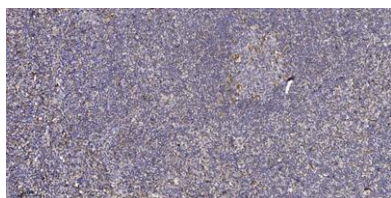


ELK Biotechnology



Western Blot analysis of various cells using CYP4Z1/2 Polyclonal Antibody

Immunohistochemical analysis of paraffin-embedded human tonsil. 1, Antibody was diluted at 1:200(4° overnight). 2, Tris-EDTA,pH9.0 was used for antigen retrieval. 3,Secondary antibody was diluted at 1:200(room temperature, 30min).



+86-27-59760950

ELKbio@ELKbiotech.com

www.elkbiotech.com

23-2, No.388 Gaoxin 2nd Road,Wuhan East Lake Hi-tech Development Zone, Hubei , P.R.C