



# CYP4A11/22 rabbit pAb

Cat No.:ES2110

For research use only

## Overview

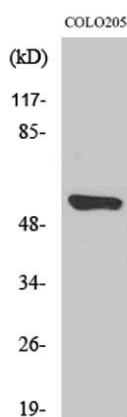
<b>Product Name</b>	CYP4A11/22 rabbit pAb
<b>Host species</b>	Rabbit
<b>Applications</b>	WB;ELISA
<b>Species Cross-Reactivity</b>	Human;Rat;Mouse;
<b>Recommended dilutions</b>	Western Blot: 1/500 - 1/2000. ELISA: 1/40000. Not yet tested in other applications.
<b>Immunogen</b>	The antiserum was produced against synthesized peptide derived from human Cytochrome P450 4A11/22. AA range:391-440
<b>Specificity</b>	CYP4A11/22 Polyclonal Antibody detects endogenous levels of CYP4A11/22 protein.
<b>Formulation</b>	Liquid in PBS containing 50% glycerol, 0.5% BSA and 0.02% sodium azide.
<b>Storage</b>	Store at -20°C. Avoid repeated freeze-thaw cycles.
<b>Protein Name</b>	Cytochrome P450 4A11/22
<b>Gene Name</b>	CYP4A11/CYP4A22
<b>Cellular localization</b>	Endoplasmic reticulum membrane ; Peripheral membrane protein . Microsome membrane ; Peripheral membrane protein .
<b>Purification</b>	The antibody was affinity-purified from rabbit antiserum by affinity-chromatography using epitope-specific immunogen.
<b>Clonality</b>	Polyclonal
<b>Concentration</b>	1 mg/ml
<b>Observed band</b>	60kD
<b>Human Gene ID</b>	1579/284541
<b>Human Swiss-Prot Number</b>	Q02928/Q5TCH4
<b>Alternative Names</b>	CYP4A11; CYP4A2; Cytochrome P450 4A11; 20-hydroxyeicosatetraenoic acid synthase; 20-HETE synthase; CYP4AII; CYPIVA11; Cytochrome P-450HK-omega; Cytochrome P450HL-omega; Fatty acid omega-hydroxylase; Lauric acid omega-hydroxylase; CYP4A22; C





## Background

cytochrome P450 family 4 subfamily A member 11(CYP4A11) Homo sapiens This gene encodes a member of the cytochrome P450 superfamily of enzymes. The cytochrome P450 proteins are monooxygenases which catalyze many reactions involved in drug metabolism and synthesis of cholesterol, steroids and other lipids. This protein localizes to the endoplasmic reticulum and hydroxylates medium-chain fatty acids such as laurate and myristate. Multiple transcript variants have been found for this gene. [provided by RefSeq, Jan 2016],



Western Blot analysis of various cells using CYP4A11/22 Polyclonal Antibody

