



CUL-3 rabbit pAb

Cat No.:ES2074

For research use only

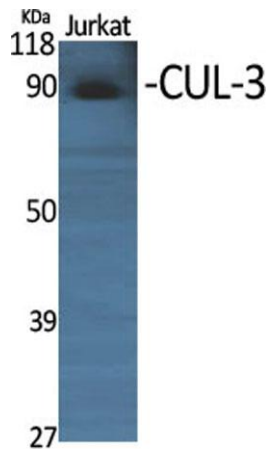
Overview

Product Name	CUL-3 rabbit pAb
Host species	Rabbit
Applications	WB;IHC;IF;ELISA
Species Cross-Reactivity	Human;Mouse
Recommended dilutions	Immunohistochemistry: 1/100 - 1/300. ELISA: 1/5000. Not yet tested in other applications.
Immunogen	The antiserum was produced against synthesized peptide derived from human Cullin 3. AA range:1-50
Specificity	CUL-3 Polyclonal Antibody detects endogenous levels of CUL-3 protein.
Formulation	Liquid in PBS containing 50% glycerol, 0.5% BSA and 0.02% sodium azide.
Storage	Store at -20°C. Avoid repeated freeze-thaw cycles.
Protein Name	Cullin-3
Gene Name	CUL3
Cellular localization	Nucleus . Golgi apparatus . Cell projection, cilium, flagellum . Cytoplasm, cytoskeleton, spindle . Cytoplasm. Cytoplasm, cytoskeleton, microtubule organizing center, centrosome . Cytoplasm, cytoskeleton, spindle pole . Detected along the length of the sp
Purification	The antibody was affinity-purified from rabbit antiserum by affinity-chromatography using epitope-specific immunogen.
Clonality	Polyclonal
Concentration	1 mg/ml
Observed band	90kD
Human Gene ID	8452
Human Swiss-Prot Number	Q13618
Alternative Names	CUL3; KIAA0617; Cullin-3; CUL-3
Background	This gene encodes a member of the cullin protein family. The encoded protein plays a critical role in the polyubiquitination and subsequent degradation





of specific protein substrates as the core component and scaffold protein of an E3 ubiquitin ligase complex. Complexes including the encoded protein may also play a role in late endosome maturation. Mutations in this gene are a cause of type 2E pseudohypoaldosteronism. Alternatively spliced transcript variants encoding multiple isoforms have been observed for this gene. [provided by RefSeq, Mar 2012],



Western Blot analysis of various cells using CUL-3 Polyclonal Antibody diluted at 1:1000

Immunohistochemistry analysis of paraffin-embedded human thyroid gland tissue, using Cullin 3 Antibody. The picture on the right is blocked with the synthesized peptide.

