



CSRNP2 rabbit pAb

Cat No.:ES2065

For research use only

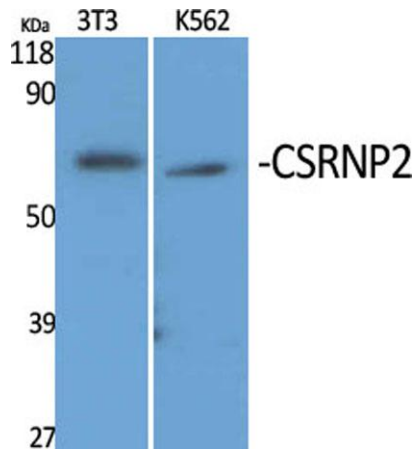
Overview

Product Name	CSRNP2 rabbit pAb
Host species	Rabbit
Applications	WB;IHC;IF;ELISA
Species Cross-Reactivity	Human;Mouse;Rat
Recommended dilutions	Western Blot: 1/500 - 1/2000. Immunohistochemistry: 1/100 - 1/300. ELISA: 1/20000. Not yet tested in other applications.
Immunogen	The antiserum was produced against synthesized peptide derived from human TAIP-12. AA range:91-140
Specificity	CSRNP2 Polyclonal Antibody detects endogenous levels of CSRNP2 protein.
Formulation	Liquid in PBS containing 50% glycerol, 0.5% BSA and 0.02% sodium azide.
Storage	Store at -20°C. Avoid repeated freeze-thaw cycles.
Protein Name	Cysteine/serine-rich nuclear protein 2
Gene Name	CSRNP2
Cellular localization	Nucleus .
Purification	The antibody was affinity-purified from rabbit antiserum by affinity-chromatography using epitope-specific immunogen.
Clonality	Polyclonal
Concentration	1 mg/ml
Observed band	60kD
Human Gene ID	81566
Human Swiss-Prot Number	Q9H175
Alternative Names	CSRNP2; C12orf22; FAM130A1; TAIP12; Cysteine/serine-rich nuclear protein 2; CSRNP-2; Protein FAM130A1; TGF-beta-induced apoptosis protein 12; TAIP-12
Background	The protein encoded by this gene belongs to the CSRNP family of nuclear proteins that share conserved regions, including cysteine- and serine-

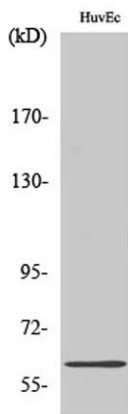




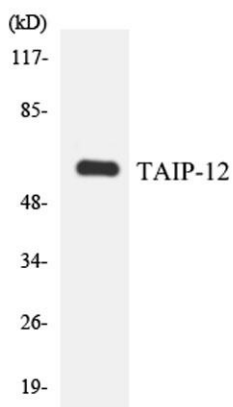
rich regions, a basic domain, a transcriptional activation domain, and bind the sequence 'AGAGTG', thus have the hallmark of transcription factors. Studies in mice suggest that these genes may have redundant functions. Alternatively spliced transcript variants have been found for this gene. [provided by RefSeq, Aug 2011],



Western Blot analysis of various cells using CSRNP2 Polyclonal Antibody cells nucleus extracted by Minute TM Cytoplasmic and Nuclear Fractionation kit (SC-003, Inventbiotech, MN, USA).



Western Blot analysis of A549 cells using CSRNP2 Polyclonal Antibody cells nucleus extracted by Minute TM Cytoplasmic and Nuclear Fractionation kit (SC-003, Inventbiotech, MN, USA).

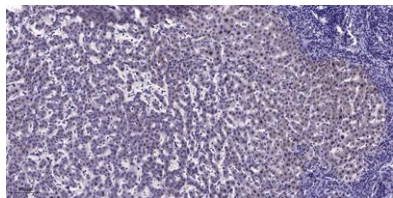


Western blot analysis of the lysates from 293 cells using TAIP-12 antibody.





ELK Biotechnology



Immunohistochemical analysis of paraffin-embedded human liver cancer. 1, Antibody was diluted at 1:200(4° overnight). 2, Tris-EDTA,pH9.0 was used for antigen retrieval. 3,Secondary antibody was diluted at 1:200(room temperature, 45min).



+86-27-59760950

ELKbio@ELKbiotech.com

www.elkbiotech.com

23-2, No.388 Gaoxin 2nd Road,Wuhan East Lake Hi-tech Development Zone, Hubei , P.R.C