



CSN3 rabbit pAb

Cat No.:ES2059

For research use only

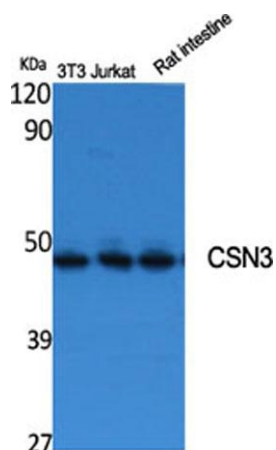
Overview

Product Name	CSN3 rabbit pAb
Host species	Rabbit
Applications	WB;IHC;IF;ELISA
Species Cross-Reactivity	Human;Mouse;Rat
Recommended dilutions	Western Blot: 1/500 - 1/2000. Immunohistochemistry: 1/100 - 1/300. Immunofluorescence: 1/200 - 1/1000. ELISA: 1/10000. Not yet tested in other applications.
Immunogen	The antiserum was produced against synthesized peptide derived from human JAB1. AA range:374-423
Specificity	CSN3 Polyclonal Antibody detects endogenous levels of CSN3 protein.
Formulation	Liquid in PBS containing 50% glycerol, 0.5% BSA and 0.02% sodium azide.
Storage	Store at -20°C. Avoid repeated freeze-thaw cycles.
Protein Name	COP9 signalosome complex subunit 3
Gene Name	COPS3
Cellular localization	Cytoplasm . Nucleus .
Purification	The antibody was affinity-purified from rabbit antiserum by affinity-chromatography using epitope-specific immunogen.
Clonality	Polyclonal
Concentration	1 mg/ml
Observed band	47kD
Human Gene ID	8533
Human Swiss-Prot Number	Q9UNS2
Alternative Names	COPS3; CSN3; COP9 signalosome complex subunit 3; SGN3; Signalosome subunit 3; JAB1-containing signalosome subunit 3
Background	The protein encoded by this gene possesses kinase activity that phosphorylates regulators involved in signal transduction. It phosphorylates I

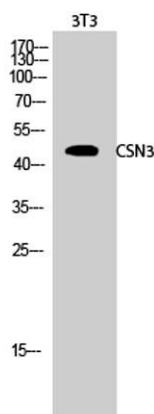




kappa-Balpa, p105, and c-Jun. It acts as a docking site for complex-mediated phosphorylation. The gene is located within the Smith-Magenis syndrome region on chromosome 17. Several transcript variants encoding different isoforms have been found for this gene. [provided by RefSeq, Oct 2015],

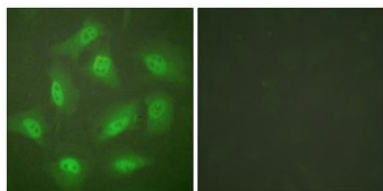


Western Blot analysis of various cells using CSN3 Polyclonal Antibody



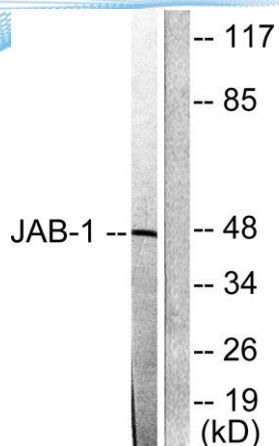
Western Blot analysis of 3T3 cells using CSN3 Polyclonal Antibody

Immunofluorescence analysis of HeLa cells, using JAB1 Antibody. The picture on the right is blocked with the synthesized peptide.





ELK Biotechnology



Western blot analysis of lysates from LOVO cells, using JAB1 Antibody. The lane on the right is blocked with the synthesized peptide.



+86-27-59760950

ELKbio@ELKbiotech.com

www.elkbiotech.com

23-2, No.388 Gaoxin 2nd Road,Wuhan East Lake Hi-tech Development Zone, Hubei , P.R.C