



# Csk rabbit pAb

Cat No.:ES2058

For research use only

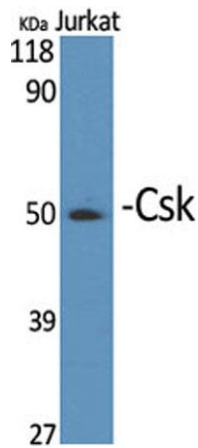
## Overview

<b>Product Name</b>	Csk rabbit pAb
<b>Host species</b>	Rabbit
<b>Applications</b>	WB;IHC;IF;ELISA
<b>Species Cross-Reactivity</b>	Human;Mouse;Rat
<b>Recommended dilutions</b>	Western Blot: 1/500 - 1/2000. Immunohistochemistry: 1/100 - 1/300. ELISA: 1/20000. Not yet tested in other applications.
<b>Immunogen</b>	The antiserum was produced against synthesized peptide derived from human CSK. AA range:330-379
<b>Specificity</b>	Csk Polyclonal Antibody detects endogenous levels of Csk protein.
<b>Formulation</b>	Liquid in PBS containing 50% glycerol, 0.5% BSA and 0.02% sodium azide.
<b>Storage</b>	Store at -20°C. Avoid repeated freeze-thaw cycles.
<b>Protein Name</b>	Tyrosine-protein kinase CSK
<b>Gene Name</b>	CSK
<b>Cellular localization</b>	Cytoplasm . Cell membrane . Mainly cytoplasmic, also present in lipid rafts. .
<b>Purification</b>	The antibody was affinity-purified from rabbit antiserum by affinity-chromatography using epitope-specific immunogen.
<b>Clonality</b>	Polyclonal
<b>Concentration</b>	1 mg/ml
<b>Observed band</b>	50kD
<b>Human Gene ID</b>	1445
<b>Human Swiss-Prot Number</b>	P41240
<b>Alternative Names</b>	CSK; Tyrosine-protein kinase CSK; C-Src kinase; Protein-tyrosine kinase CYL
<b>Background</b>	catalytic activity:ATP + a [protein]-L-tyrosine = ADP + a [protein]-L-tyrosine phosphate.,function:Specifically phosphorylates 'Tyr-504' on LCK, which acts as a negative regulatory site. Can also act on the LYN and FYN

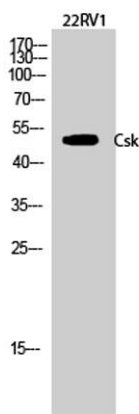




kinases.,PTM:Autophosphorylation of Tyr-304 occurs only at abnormally high CSK concentrations in vitro.,similarity:Belongs to the protein kinase superfamily. Tyr protein kinase family.,similarity:Belongs to the protein kinase superfamily. Tyr protein kinase family. CSK subfamily.,similarity:Contains 1 protein kinase domain.,similarity:Contains 1 SH2 domain.,similarity:Contains 1 SH3 domain.,subcellular location:Mainly cytoplasmic, also present in lipid rafts.,subunit:Interacts with PTPN8 (By similarity). Interacts with phosphorylated SIT1, PAG1, LIME1 and TGFB1I1.,tissue specificity:Expressed in lung and macrophages.,



Western Blot analysis of various cells using Csk Polyclonal Antibody diluted at 1:1000

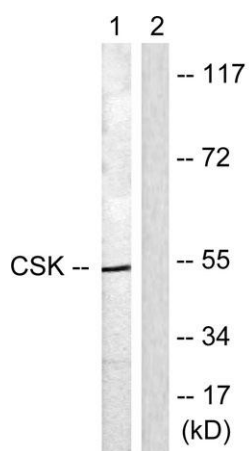
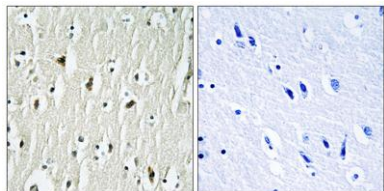


Western Blot analysis of 22RV1 cells using Csk Polyclonal Antibody diluted at 1:1000





Immunohistochemistry analysis of paraffin-embedded human brain tissue, using CSK Antibody. The picture on the right is blocked with the synthesized peptide.



Western blot analysis of lysates from Raw264.7 cells, treated with UV 5', using CSK Antibody. The lane on the right is blocked with the synthesized peptide.

