



CREB3L2 rabbit pAb

Cat No.:ES2048

For research use only

Overview

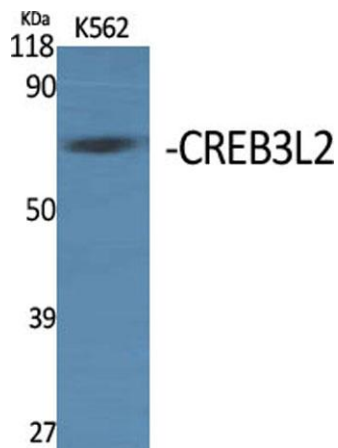
Product Name	CREB3L2 rabbit pAb
Host species	Rabbit
Applications	WB;ELISA
Species Cross-Reactivity	Human;Mouse;Rat
Recommended dilutions	Western Blot: 1/500 - 1/2000. ELISA: 1/10000. Not yet tested in other applications.
Immunogen	The antiserum was produced against synthesized peptide derived from human CREB3L2. AA range:269-318
Specificity	CREB3L2 Polyclonal Antibody detects endogenous levels of CREB3L2 protein.
Formulation	Liquid in PBS containing 50% glycerol, 0.5% BSA and 0.02% sodium azide.
Storage	Store at -20°C. Avoid repeated freeze-thaw cycles.
Protein Name	Cyclic AMP-responsive element-binding protein 3-like protein 2
Gene Name	CREB3L2
Cellular localization	Endoplasmic reticulum membrane ; Single-pass type II membrane protein. ER membrane resident protein. Upon ER stress, translocated to the Golgi apparatus where it is cleaved. The cytosolic N-terminal fragment (processed cyclic AMP-responsive element-bindin
Purification	The antibody was affinity-purified from rabbit antiserum by affinity-chromatography using epitope-specific immunogen.
Clonality	Polyclonal
Concentration	1 mg/ml
Observed band	58kD
Human Gene ID	64764
Human Swiss-Prot Number	Q70SY1
Alternative Names	CREB3L2; BBF2H7; Cyclic AMP-responsive element-binding protein 3-like protein 2;



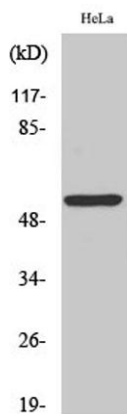


Background

cAMP-responsive element-binding protein 3-like protein 2; BBF2 human homolog on chromosome 7
This gene encodes a member of the oasis bZIP transcription factor family. Members of this family can dimerize but form homodimers only. The encoded protein is a transcriptional activator. Translocations between this gene on chromosome 7 and the gene fused in sarcoma on chromosome 16 can be found in some tumors. Multiple transcript variants encoding different isoforms have been found for this gene. [provided by RefSeq, Dec 2011],



Western Blot analysis of various cells using CREB3L2 Polyclonal Antibody

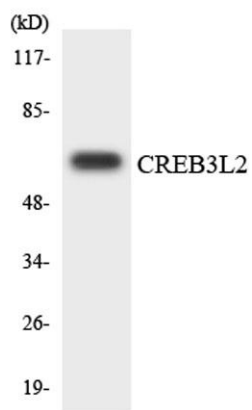


Western Blot analysis of HeLa cells using CREB3L2 Polyclonal Antibody





ELK Biotechnology



Western blot analysis of the lysates from 293 cells using CREB3L2 antibody.



+86-27-59760950

ELKbio@ELKbiotech.com

www.elkbiotech.com

23-2, No.388 Gaoxin 2nd Road,Wuhan East Lake Hi-tech Development Zone, Hubei , P.R.C