



# Creatine Kinase M rabbit pAb

Cat No.:ES2043

For research use only

## Overview

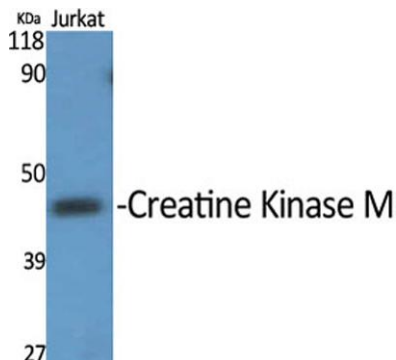
<b>Product Name</b>	Creatine Kinase M rabbit pAb
<b>Host species</b>	Rabbit
<b>Applications</b>	WB;IHC;IF;ELISA
<b>Species Cross-Reactivity</b>	Human;Mouse;Rat
<b>Recommended dilutions</b>	Western Blot: 1/500 - 1/2000. Immunohistochemistry: 1/100 - 1/300. Immunofluorescence: 1/200 - 1/1000. ELISA: 1/40000. Not yet tested in other applications.
<b>Immunogen</b>	The antiserum was produced against synthesized peptide derived from human M-CK. AA range:10-59
<b>Specificity</b>	Creatine Kinase M Polyclonal Antibody detects endogenous levels of Creatine Kinase M protein.
<b>Formulation</b>	Liquid in PBS containing 50% glycerol, 0.5% BSA and 0.02% sodium azide.
<b>Storage</b>	Store at -20°C. Avoid repeated freeze-thaw cycles.
<b>Protein Name</b>	Creatine kinase M-type
<b>Gene Name</b>	CKM
<b>Cellular localization</b>	Cytoplasm.
<b>Purification</b>	The antibody was affinity-purified from rabbit antiserum by affinity-chromatography using epitope-specific immunogen.
<b>Clonality</b>	Polyclonal
<b>Concentration</b>	1 mg/ml
<b>Observed band</b>	43kD
<b>Human Gene ID</b>	1158
<b>Human Swiss-Prot Number</b>	P06732
<b>Alternative Names</b>	CKM; CKMM; Creatine kinase M-type; Creatine kinase M chain; M-CK
<b>Background</b>	The protein encoded by this gene is a cytoplasmic enzyme involved in energy homeostasis and is an important serum marker for myocardial infarction. The encoded protein reversibly catalyzes the transfer of phosphate between ATP and various



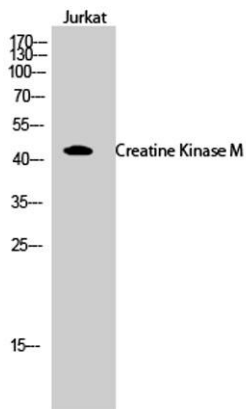


phosphogens such as creatine phosphate. It acts as a homodimer in striated muscle as well as in other tissues, and as a heterodimer with a similar brain isozyme in heart. The encoded protein is a member of the ATP:guanido phosphotransferase protein family. [provided by RefSeq, Jul 2008],

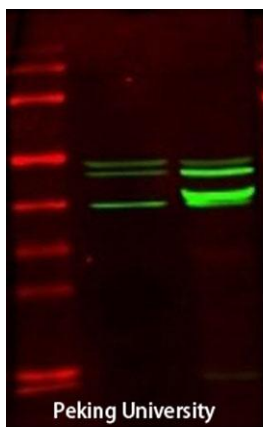
Western Blot analysis of various cells using Creatine Kinase M Polyclonal Antibody



Western Blot analysis of Jurkat cells using Creatine Kinase M Polyclonal Antibody



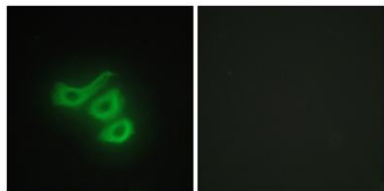
The picture was kindly provided by our customer





**ELK Biotechnology**

Immunofluorescence analysis of HepG2 cells, using M-CK Antibody. The picture on the right is blocked with the synthesized peptide.



+86-27-59760950

[ELKbio@ELKbiotech.com](mailto:ELKbio@ELKbiotech.com)

[www.elkbiotech.com](http://www.elkbiotech.com)

23-2, No.388 Gaoxin 2nd Road, Wuhan East Lake Hi-tech Development Zone, Hubei, P.R.C