

CRABP-II rabbit pAb

Cat No.:ES2042

For research use only

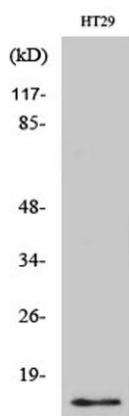
Overview

Product Name	CRABP-II rabbit pAb
Host species	Rabbit
Applications	WB;IHC;IF;ELISA
Species Cross-Reactivity	Human;Mouse;Rat
Recommended dilutions	Western Blot: 1/500 - 1/2000. Immunohistochemistry: 1/100 - 1/300. ELISA: 1/20000. Not yet tested in other applications.
Immunogen	The antiserum was produced against synthesized peptide derived from human CRABP2. AA range:41-90
Specificity	CRABP-II Polyclonal Antibody detects endogenous levels of CRABP-II protein.
Formulation	Liquid in PBS containing 50% glycerol, 0.5% BSA and 0.02% sodium azide.
Storage	Store at -20°C. Avoid repeated freeze-thaw cycles.
Protein Name	Cellular retinoic acid-binding protein 2
Gene Name	CRABP2
Cellular localization	Cytoplasm. Endoplasmic reticulum. Nucleus. Upon ligand binding, a conformation change exposes a nuclear localization motif and the protein is transported into the nucleus.
Purification	The antibody was affinity-purified from rabbit antiserum by affinity-chromatography using epitope-specific immunogen.
Clonality	Polyclonal
Concentration	1 mg/ml
Observed band	16kD
Human Gene ID	1382
Human Swiss-Prot Number	P29373
Alternative Names	CRABP2; Cellular retinoic acid-binding protein 2; Cellular retinoic acid-binding protein II; CRABP-II
Background	This gene encodes a member of the retinoic acid (RA, a form of vitamin A) binding protein family and

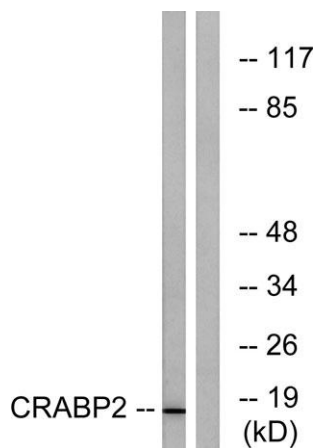




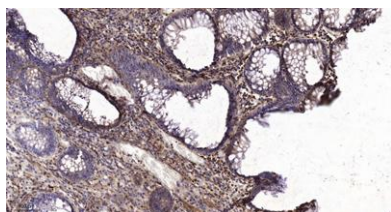
lipocalin/cytosolic fatty-acid binding protein family. The protein is a cytosol-to-nuclear shuttling protein, which facilitates RA binding to its cognate receptor complex and transfer to the nucleus. It is involved in the retinoid signaling pathway, and is associated with increased circulating low-density lipoprotein cholesterol. Alternatively spliced transcript variants encoding the same protein have been found for this gene.[provided by RefSeq, Dec 2010],



Western Blot analysis of various cells using CRABP-II Polyclonal Antibody



Western blot analysis of lysates from HT-29 cells, using CRABP2 Antibody. The lane on the right is blocked with the synthesized peptide.



Immunohistochemical analysis of paraffin-embedded human colon cancer. 1, Tris-EDTA, pH 9.0 was used for antigen retrieval. 2 Antibody was diluted at 1:200 (4° overnight). 3, Secondary antibody was diluted at 1:200 (room temperature, 45 min).





ELK Biotechnology



+86-27-59760950

ELKbio@ELKbiotech.com

www.elkbiotech.com

23-2, No.388 Gaoxin 2nd Road,Wuhan East Lake Hi-tech Development Zone, Hubei , P.R.C