



# CPN cat rabbit pAb

Cat No.:ES2041

For research use only

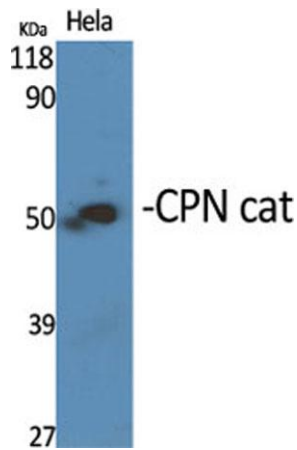
## Overview

<b>Product Name</b>	CPN cat rabbit pAb
<b>Host species</b>	Rabbit
<b>Applications</b>	WB;ELISA
<b>Species Cross-Reactivity</b>	Human;Rat;Mouse;
<b>Recommended dilutions</b>	Western Blot: 1/500 - 1/2000. ELISA: 1/20000. Not yet tested in other applications.
<b>Immunogen</b>	The antiserum was produced against synthesized peptide derived from human CPN1. AA range:409-458
<b>Specificity</b>	CPN cat Polyclonal Antibody detects endogenous levels of CPN cat protein.
<b>Formulation</b>	Liquid in PBS containing 50% glycerol, 0.5% BSA and 0.02% sodium azide.
<b>Storage</b>	Store at -20°C. Avoid repeated freeze-thaw cycles.
<b>Protein Name</b>	Carboxypeptidase N catalytic chain
<b>Gene Name</b>	CPN1
<b>Cellular localization</b>	Secreted, extracellular space.
<b>Purification</b>	The antibody was affinity-purified from rabbit antiserum by affinity-chromatography using epitope-specific immunogen.
<b>Clonality</b>	Polyclonal
<b>Concentration</b>	1 mg/ml
<b>Observed band</b>	total 52kD,Cleaved 48kD
<b>Human Gene ID</b>	1369
<b>Human Swiss-Prot Number</b>	P15169
<b>Alternative Names</b>	CPN1; ACBP; Carboxypeptidase N catalytic chain; CPN; Anaphylatoxin inactivator; Arginine carboxypeptidase; Carboxypeptidase N polypeptide 1; Carboxypeptidase N small subunit; Kininase-1; Lysine carboxypeptidase; Plasma carboxypeptidase B; S
<b>Background</b>	Carboxypeptidase N is a plasma metallo-protease that cleaves basic amino acids from the C terminal

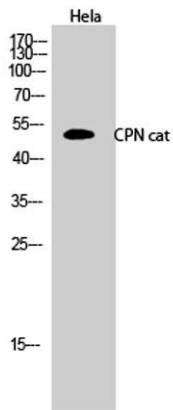




of peptides and proteins. The enzyme is important in the regulation of peptides like kinins and anaphylatoxins, and has also been known as kininase-1 and anaphylatoxin inactivator. This enzyme is a tetramer comprised of two identical regulatory subunits and two identical catalytic subunits; this gene encodes the catalytic subunit. Mutations in this gene can be associated with angioedema or chronic urticaria resulting from carboxypeptidase N deficiency. [provided by RefSeq, Jul 2008],



Western Blot analysis of various cells using CPN cat Polyclonal Antibody

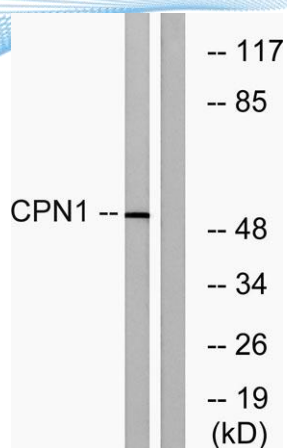


Western Blot analysis of HeLa cells using CPN cat Polyclonal Antibody





**ELK Biotechnology**



Western blot analysis of lysates from RAW264.7 cells, using CPN1 Antibody. The lane on the right is blocked with the synthesized peptide.



+86-27-59760950

[ELKbio@ELKbiotech.com](mailto:ELKbio@ELKbiotech.com)

[www.elkbiotech.com](http://www.elkbiotech.com)

23-2, No.388 Gaoxin 2nd Road,Wuhan East Lake Hi-tech Development Zone, Hubei , P.R.C