



COX6c rabbit pAb

Cat No.:ES2036

For research use only

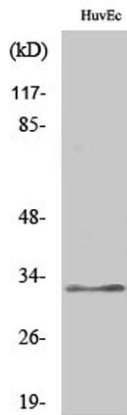
Overview

Product Name	COX6c rabbit pAb
Host species	Rabbit
Applications	WB;IHC;IF;ELISA
Species Cross-Reactivity	Human;Mouse;Rat
Recommended dilutions	Western Blot: 1/500 - 1/2000. Immunohistochemistry: 1/100 - 1/300. Immunofluorescence: 1/200 - 1/1000. ELISA: 1/20000. Not yet tested in other applications.
Immunogen	The antiserum was produced against synthesized peptide derived from human COX6C. AA range:11-60
Specificity	COX6c Polyclonal Antibody detects endogenous levels of COX6c protein.
Formulation	Liquid in PBS containing 50% glycerol, 0.5% BSA and 0.02% sodium azide.
Storage	Store at -20°C. Avoid repeated freeze-thaw cycles.
Protein Name	Cytochrome c oxidase subunit 6C
Gene Name	COX6C
Cellular localization	Mitochondrion inner membrane ; Single-pass membrane protein .
Purification	The antibody was affinity-purified from rabbit antiserum by affinity-chromatography using epitope-specific immunogen.
Clonality	Polyclonal
Concentration	1 mg/ml
Observed band	32kD
Human Gene ID	1345
Human Swiss-Prot Number	P09669
Alternative Names	COX6C; Cytochrome c oxidase subunit 6C; Cytochrome c oxidase polypeptide VIc
Background	Cytochrome c oxidase, the terminal enzyme of the mitochondrial respiratory chain, catalyzes the electron transfer from reduced cytochrome c to



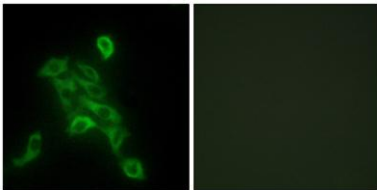


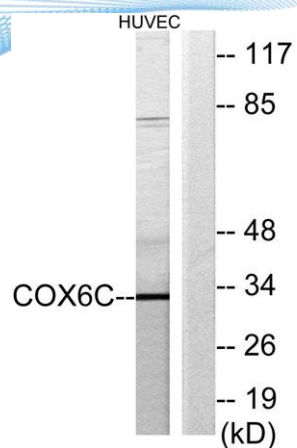
oxygen. It is a heteromeric complex consisting of 3 catalytic subunits encoded by mitochondrial genes and multiple structural subunits encoded by nuclear genes. The mitochondrially-encoded subunits function in electron transfer, and the nuclear-encoded subunits may be involved in the regulation and assembly of the complex. This nuclear gene encodes subunit VIc, which has 77% amino acid sequence identity with mouse subunit VIc. This gene is up-regulated in prostate cancer cells. A pseudogene has been found on chromosomes 16p12. [provided by RefSeq, Jul 2010],



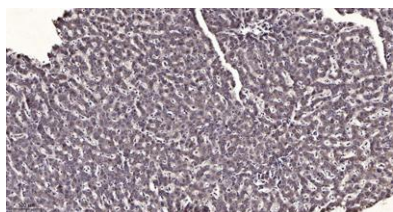
Western Blot analysis of various cells using COX6c Polyclonal Antibody

Immunofluorescence analysis of HepG2 cells, using COX6C Antibody. The picture on the right is blocked with the synthesized peptide.





Western blot analysis of lysates from HUVEC cells, using COX6C Antibody. The lane on the right is blocked with the synthesized peptide.



Immunohistochemical analysis of paraffin-embedded human liver cancer. 1, Antibody was diluted at 1:200(4° overnight). 2, Tris-EDTA,pH9.0 was used for antigen retrieval. 3,Secondary antibody was diluted at 1:200(room temperature, 45min).

