



Connexin-26 rabbit pAb

Cat No.:ES2029

For research use only

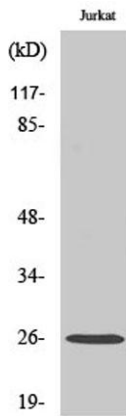
Overview

Product Name	Connexin-26 rabbit pAb
Host species	Rabbit
Applications	WB;ELISA
Species Cross-Reactivity	Human;Mouse;Rat
Recommended dilutions	Western Blot: 1/500 - 1/2000. ELISA: 1/5000. Not yet tested in other applications.
Immunogen	The antiserum was produced against synthesized peptide derived from human Connexin-26. AA range:45-94
Specificity	Connexin-26 Polyclonal Antibody detects endogenous levels of Connexin-26 protein.
Formulation	Liquid in PBS containing 50% glycerol, 0.5% BSA and 0.02% sodium azide.
Storage	Store at -20°C. Avoid repeated freeze-thaw cycles.
Protein Name	Gap junction beta-2 protein
Gene Name	GJB2
Cellular localization	Cell membrane ; Multi-pass membrane protein . Cell junction, gap junction . Colocalizes with GJB4 at gap junction plaques in the cochlea. .
Purification	The antibody was affinity-purified from rabbit antiserum by affinity-chromatography using epitope-specific immunogen.
Clonality	Polyclonal
Concentration	1 mg/ml
Observed band	26kD
Human Gene ID	2706
Human Swiss-Prot Number	P29033
Alternative Names	GJB2; Gap junction beta-2 protein; Connexin-26; Cx26
Background	This gene encodes a member of the gap junction protein family. The gap junctions were first characterized by electron microscopy as regionally specialized structures on plasma membranes of

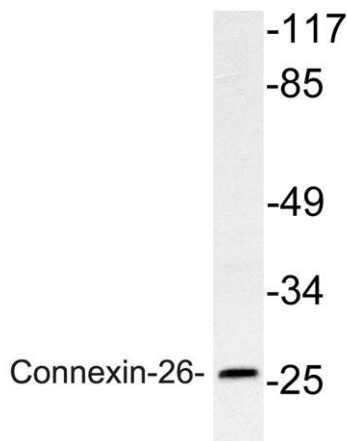




contacting adherent cells. These structures were shown to consist of cell-to-cell channels that facilitate the transfer of ions and small molecules between cells. The gap junction proteins, also known as connexins, purified from fractions of enriched gap junctions from different tissues differ. According to sequence similarities at the nucleotide and amino acid levels, the gap junction proteins are divided into two categories, alpha and beta. Mutations in this gene are responsible for as much as 50% of pre-lingual, recessive deafness. [provided by RefSeq, Oct 2008],



Western Blot analysis of various cells using Connexin-26 Polyclonal Antibody diluted at 1:500



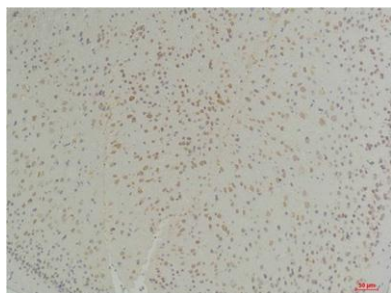
Western blot analysis of lysate from Jurkat cells, using Connexin-26 antibody.





ELK Biotechnology

Immunohistochemical analysis of paraffin-embedded
Mouse Brain Tissue using Connexin-26Rabbit pAb diluted
at 1:200.



+86-27-59760950

ELKbio@ELKbiotech.com

www.elkbiotech.com

23-2, No.388 Gaoxin 2nd Road,Wuhan East Lake Hi-tech Development Zone, Hubei , P.R.C