



# Connexin 25 rabbit pAb

Cat No.:ES2027

For research use only

## Overview

<b>Product Name</b>	Connexin 25 rabbit pAb
<b>Host species</b>	Rabbit
<b>Applications</b>	WB;ELISA
<b>Species Cross-Reactivity</b>	Human;Rat;Mouse;
<b>Recommended dilutions</b>	Western Blot: 1/500 - 1/2000. ELISA: 1/10000. Not yet tested in other applications.
<b>Immunogen</b>	The antiserum was produced against synthesized peptide derived from human GJB7. AA range:21-70
<b>Specificity</b>	Connexin 25 Polyclonal Antibody detects endogenous levels of Connexin 25 protein.
<b>Formulation</b>	Liquid in PBS containing 50% glycerol, 0.5% BSA and 0.02% sodium azide.
<b>Storage</b>	Store at -20°C. Avoid repeated freeze-thaw cycles.
<b>Protein Name</b>	Gap junction beta-7 protein
<b>Gene Name</b>	GJB7
<b>Cellular localization</b>	Cell membrane ; Multi-pass membrane protein . Cell junction, gap junction .
<b>Purification</b>	The antibody was affinity-purified from rabbit antiserum by affinity-chromatography using epitope-specific immunogen.
<b>Clonality</b>	Polyclonal
<b>Concentration</b>	1 mg/ml
<b>Observed band</b>	24kD
<b>Human Gene ID</b>	375519
<b>Human Swiss-Prot Number</b>	Q6PEY0
<b>Alternative Names</b>	GJB7; CX25; Gap junction beta-7 protein; Connexin-25; Cx25
<b>Background</b>	Connexins, such as GJB7, are involved in the formation of gap junctions, intercellular conduits that directly connect the cytoplasm of contacting cells. Each gap junction channel is formed by docking of 2 hemichannels, each of which contains 6 connexin subunits (Sohl et al., 2003 [PubMed



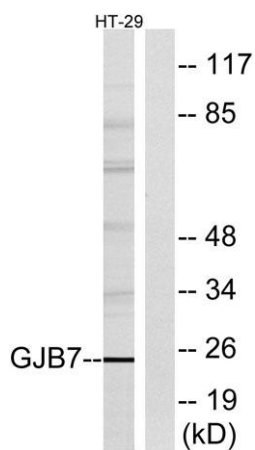


12881038)].[supplied by OMIM, Mar 2008],

Western Blot analysis of various cells using Connexin 25 Polyclonal Antibody diluted at 1:500



Western blot analysis of lysates from HT-29 cells, using GJB7 Antibody. The lane on the right is blocked with the synthesized peptide.



Western blot analysis of the lysates from HeLa cells using GJB7 antibody.

