



COL4A1 rabbit pAb

Cat No.:ES2023

For research use only

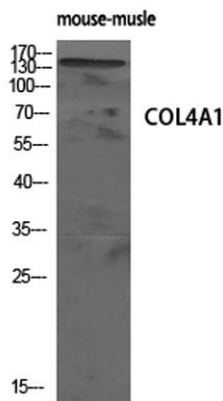
Overview

Product Name	COL4A1 rabbit pAb
Host species	Rabbit
Applications	WB;IHC;IF;ELISA
Species Cross-Reactivity	Human;Mouse
Recommended dilutions	Western Blot: 1/500 - 1/2000. Immunohistochemistry: 1/100 - 1/300. ELISA: 1/20000. Not yet tested in other applications.
Immunogen	The antiserum was produced against synthesized peptide derived from human Collagen IV. AA range:11-60
Specificity	COL4A1 Polyclonal Antibody detects endogenous levels of COL4A1 protein.
Formulation	Liquid in PBS containing 50% glycerol, 0.5% BSA and 0.02% sodium azide.
Storage	Store at -20°C. Avoid repeated freeze-thaw cycles.
Protein Name	Collagen alpha-1(IV) chain
Gene Name	COL4A1
Cellular localization	Secreted, extracellular space, extracellular matrix, basement membrane .
Purification	The antibody was affinity-purified from rabbit antiserum by affinity-chromatography using epitope-specific immunogen.
Clonality	Polyclonal
Concentration	1 mg/ml
Observed band	160kD
Human Gene ID	1282
Human Swiss-Prot Number	P02462
Alternative Names	COL4A1; Collagen alpha-1(IV) chain
Background	This gene encodes a type IV collagen alpha protein. Type IV collagen proteins are integral components of basement membranes. This gene shares a bidirectional promoter with a paralogous gene on the opposite strand. The protein consists of an

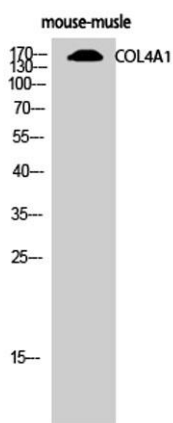




amino-terminal 7S domain, a triple-helix forming collagenous domain, and a carboxy-terminal non-collagenous domain. It functions as part of a heterotrimer and interacts with other extracellular matrix components such as perlecans, proteoglycans, and laminins. In addition, proteolytic cleavage of the non-collagenous carboxy-terminal domain results in a biologically active fragment known as arresten, which has anti-angiogenic and tumor suppressor properties. Mutations in this gene cause porencephaly, cerebrovascular disease, and renal and muscular defects. Alternative splicing results in multiple transcript variants. [provided by RefSeq, Dec 2014],



Western Blot analysis of mouse-muscle cells using COL4A1 Polyclonal Antibody diluted at 1:500

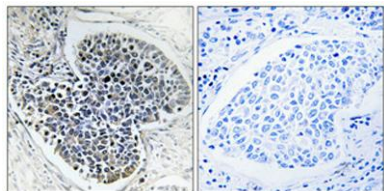


Western Blot analysis of mouse-muscle cells using COL4A1 Polyclonal Antibody diluted at 1:500





Immunohistochemical analysis of paraffin-embedded Human lung cancer. Antibody was diluted at 1:100(4° overnight). High-pressure and temperature Tris-EDTA,pH8.0 was used for antigen retrieval. Negative contrl (right) obtained from antibody was pre-absorbe



Immunohistochemistry analysis of paraffin-embedded human breast carcinoma tissue, using Collagen IV Antibody. The picture on the right is blocked with the synthesized peptide.

