



COL11A2 rabbit pAb

Cat No.:ES2019

For research use only

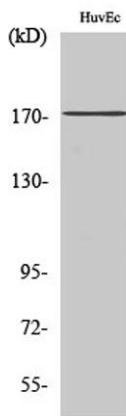
Overview

Product Name	COL11A2 rabbit pAb
Host species	Rabbit
Applications	WB;IHC;IF;ELISA
Species Cross-Reactivity	Human;Mouse
Recommended dilutions	Western Blot: 1/500 - 1/2000. Immunohistochemistry: 1/100 - 1/300. ELISA: 1/20000. Not yet tested in other applications.
Immunogen	The antiserum was produced against synthesized peptide derived from human Collagen XI alpha2. AA range:1211-1260
Specificity	COL11A2 Polyclonal Antibody detects endogenous levels of COL11A2 protein.
Formulation	Liquid in PBS containing 50% glycerol, 0.5% BSA and 0.02% sodium azide.
Storage	Store at -20°C. Avoid repeated freeze-thaw cycles.
Protein Name	Collagen alpha-2(XI) chain
Gene Name	COL11A2
Cellular localization	Secreted, extracellular space, extracellular matrix .
Purification	The antibody was affinity-purified from rabbit antiserum by affinity-chromatography using epitope-specific immunogen.
Clonality	Polyclonal
Concentration	1 mg/ml
Observed band	171kD
Human Gene ID	1302
Human Swiss-Prot Number	P13942
Alternative Names	COL11A2; Collagen alpha-2(XI) chain
Background	collagen type XI alpha 2 chain(COL11A2) Homo sapiens This gene encodes one of the two alpha chains of type XI collagen, a minor fibrillar collagen. It is located on chromosome 6 very close to but separate from the gene for retinoid X receptor beta. Type XI collagen is a heterotrimer but the third





alpha chain is a post-translationally modified alpha 1 type II chain. Proteolytic processing of this type XI chain produces PARP, a proline/arginine-rich protein that is an amino terminal domain. Mutations in this gene are associated with type III Stickler syndrome, otospondylomegaepiphyseal dysplasia (OSMED syndrome), Weissenbacher-Zweymuller syndrome, autosomal dominant non-syndromic sensorineural type 13 deafness (DFNA13), and autosomal recessive non-syndromic sensorineural type 53 deafness (DFNB53). Alternative splicing results in multiple transcript variants. A related pseudogene is located nearby on chromosome 6. [provided by RefSeq, Jul 2009],



Western Blot analysis of various cells using COL11A2 Polyclonal Antibody diluted at 1:500

Immunohistochemistry analysis of paraffin-embedded human brain tissue, using Collagen XI alpha2 Antibody. The picture on the right is blocked with the synthesized peptide.

