



CLC-KA rabbit pAb

Cat No.:ES1995

For research use only

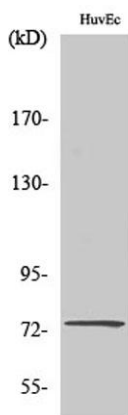
Overview

Product Name	CLC-KA rabbit pAb
Host species	Rabbit
Applications	WB;ELISA
Species Cross-Reactivity	Human;Rat;Mouse;
Recommended dilutions	Western Blot: 1/500 - 1/2000. ELISA: 1/40000. Not yet tested in other applications.
Immunogen	The antiserum was produced against synthesized peptide derived from human CLCNKA. AA range:581-630
Specificity	CLC-KA Polyclonal Antibody detects endogenous levels of CLC-KA protein.
Formulation	Liquid in PBS containing 50% glycerol, 0.5% BSA and 0.02% sodium azide.
Storage	Store at -20°C. Avoid repeated freeze-thaw cycles.
Protein Name	Chloride channel protein ClC-Ka
Gene Name	CLCNKA
Cellular localization	Membrane; Multi-pass membrane protein.
Purification	The antibody was affinity-purified from rabbit antiserum by affinity-chromatography using epitope-specific immunogen.
Clonality	Polyclonal
Concentration	1 mg/ml
Observed band	75kD
Human Gene ID	1187
Human Swiss-Prot Number	P51800
Alternative Names	CLCNKA; Chloride channel protein ClC-Ka; Chloride channel Ka; ClC-K1
Background	This gene is a member of the CLC family of voltage-gated chloride channels. The encoded protein is predicted to have 12 transmembrane domains, and requires a beta subunit called barttin to form a functional channel. It is thought to function in salt reabsorption in the kidney and

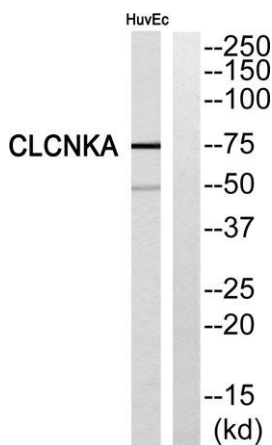




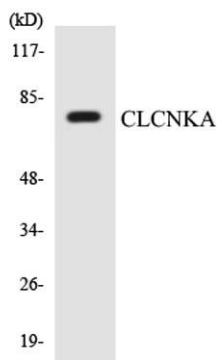
potassium recycling in the inner ear. The gene is highly similar to CLCNKB, which is located 10 kb downstream from this gene. Multiple transcript variants encoding different isoforms have been found for this gene. [provided by RefSeq, Jul 2008],



Western Blot analysis of various cells using CLC-KA Polyclonal Antibody



Western blot analysis of CLCNKA Antibody. The lane on the right is blocked with the CLCNKA peptide.



Western blot analysis of the lysates from HepG2 cells using CLCNKA antibody.

