



CIDE-B rabbit pAb

Cat No.:ES1983

For research use only

Overview

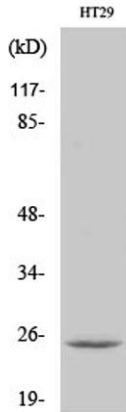
Product Name	CIDE-B rabbit pAb
Host species	Rabbit
Applications	WB;IHC;IF;ELISA
Species Cross-Reactivity	Human;Mouse
Recommended dilutions	Western Blot: 1/500 - 1/2000. Immunohistochemistry: 1/100 - 1/300. Immunofluorescence: 1/200 - 1/1000. ELISA: 1/40000. Not yet tested in other applications.
Immunogen	The antiserum was produced against synthesized peptide derived from human CIDEB. AA range:91-140
Specificity	CIDE-B Polyclonal Antibody detects endogenous levels of CIDE-B protein.
Formulation	Liquid in PBS containing 50% glycerol, 0.5% BSA and 0.02% sodium azide.
Storage	Store at -20°C. Avoid repeated freeze-thaw cycles.
Protein Name	Cell death activator CIDE-B
Gene Name	CIDEB
Cellular localization	intracellular,lipid particle,cytosol,perinuclear region of cytoplasm,
Purification	The antibody was affinity-purified from rabbit antiserum by affinity-chromatography using epitope-specific immunogen.
Clonality	Polyclonal
Concentration	1 mg/ml
Observed band	24kD
Human Gene ID	27141
Human Swiss-Prot Number	Q9UHD4
Alternative Names	CIDEB; Cell death activator CIDE-B; Cell death-inducing DFFA-like effector B
Background	function:Activates apoptosis.,similarity:Contains 1 CIDE-N domain.,subunit:Inhibited by DFFB. Interacts with DFFA and DFFB.,tissue specificity:Highly



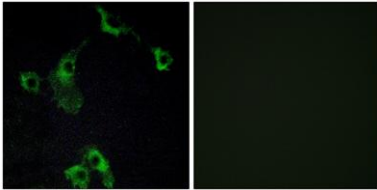


expressed in liver and small intestine and, at lower levels, in colon, kidney and spleen.,

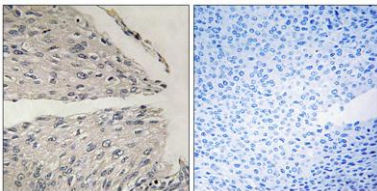
Western Blot analysis of various cells using CIDE-B Polyclonal Antibody



Immunofluorescence analysis of COS7 cells, using CIDEB Antibody. The picture on the right is blocked with the synthesized peptide.

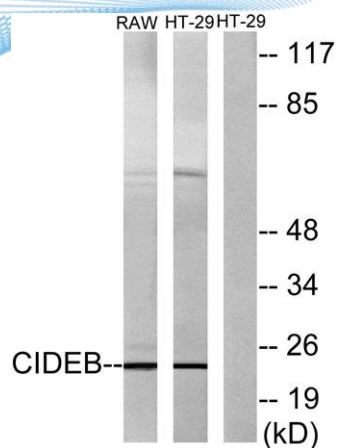


Immunohistochemistry analysis of paraffin-embedded human cervix caecinoma tissue, using CIDEB Antibody. The picture on the right is blocked with the synthesized peptide.





ELK Biotechnology



Western blot analysis of lysates from HT-29 and RAW264.7 cells, using CIDEB Antibody. The lane on the right is blocked with the synthesized peptide.



+86-27-59760950

ELKbio@ELKbiotech.com

www.elkbiotech.com

23-2, No.388 Gaoxin 2nd Road, Wuhan East Lake Hi-tech Development Zone, Hubei, P.R.C