

CHSY1 rabbit pAb

Cat No.:ES1982

For research use only

Overview

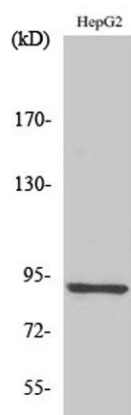
Product Name	CHSY1 rabbit pAb
Host species	Rabbit
Applications	WB;IHC;IF;ELISA
Species Cross-Reactivity	Human;Mouse
Recommended dilutions	Western Blot: 1/500 - 1/2000. Immunohistochemistry: 1/100 - 1/300. ELISA: 1/10000. Not yet tested in other applications.
Immunogen	The antiserum was produced against synthesized peptide derived from human CHSY1. AA range:341-390
Specificity	CHSY1 Polyclonal Antibody detects endogenous levels of CHSY1 protein.
Formulation	Liquid in PBS containing 50% glycerol, 0.5% BSA and 0.02% sodium azide.
Storage	Store at -20°C. Avoid repeated freeze-thaw cycles.
Protein Name	Chondroitin sulfate synthase 1
Gene Name	CHSY1
Cellular localization	Golgi apparatus, Golgi stack membrane ; Single-pass type II membrane protein . Secreted .
Purification	The antibody was affinity-purified from rabbit antiserum by affinity-chromatography using epitope-specific immunogen.
Clonality	Polyclonal
Concentration	1 mg/ml
Observed band	91kD
Human Gene ID	22856
Human Swiss-Prot Number	Q86X52
Alternative Names	CHSY1; CHSY; CSS1; KIAA0990; Chondroitin sulfate synthase 1; Chondroitin glucuronyltransferase 1; Chondroitin synthase 1; ChSy-1; Glucuronosyl-N-acetylgalactosaminyl-proteoglycan 4-beta-N-acetylgalactosaminyltransferase 1; N-acetylgalactosa



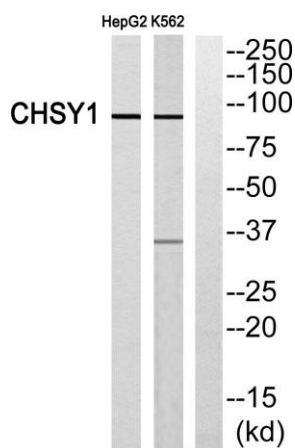


Background

This gene encodes a member of the chondroitin N-acetylgalactosaminyltransferase family. These enzymes possess dual glucuronyltransferase and galactosaminyltransferase activity and play critical roles in the biosynthesis of chondroitin sulfate, a glycosaminoglycan involved in many biological processes including cell proliferation and morphogenesis. Decreased expression of this gene may play a role in colorectal cancer, and mutations in this gene are a cause of temtamy preaxial brachydactyly syndrome. [provided by RefSeq, Dec 2011],



Western Blot analysis of various cells using CHSY1 Polyclonal Antibody



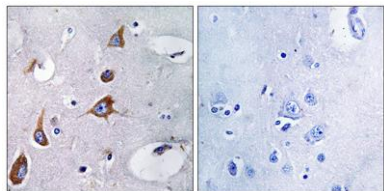
Western blot analysis of CHSY1 Antibody. The lane on the right is blocked with the CHSY1 peptide.



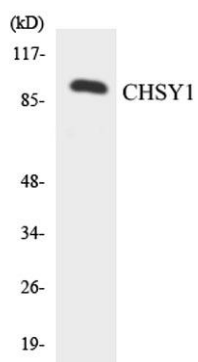


ELK Biotechnology

Immunohistochemistry analysis of paraffin-embedded human brain, using CHSY1 Antibody. The lane on the right is blocked with the CHSY1 peptide.



Western blot analysis of the lysates from HepG2 cells using CHSY1 antibody.



+86-27-59760950

ELKbio@ELKbiotech.com

www.elkbiotech.com

23-2, No.388 Gaoxin 2nd Road, Wuhan East Lake Hi-tech Development Zone, Hubei, P.R.C.