



# CHST2 rabbit pAb

Cat No.:ES1981

For research use only

## Overview

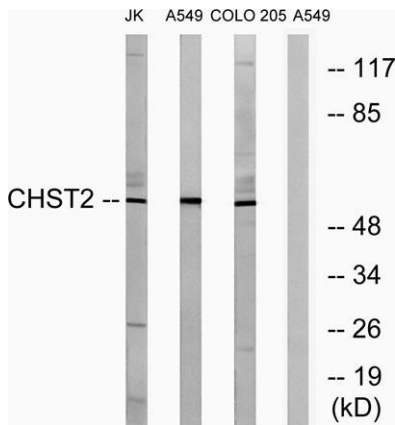
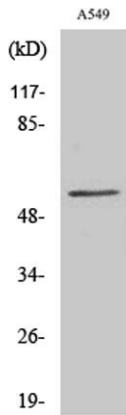
<b>Product Name</b>	CHST2 rabbit pAb
<b>Host species</b>	Rabbit
<b>Applications</b>	WB;ELISA
<b>Species Cross-Reactivity</b>	Human;Rat;Mouse;
<b>Recommended dilutions</b>	Western Blot: 1/500 - 1/2000. ELISA: 1/10000. Not yet tested in other applications.
<b>Immunogen</b>	The antiserum was produced against synthesized peptide derived from human CHST2. AA range:1-50
<b>Specificity</b>	CHST2 Polyclonal Antibody detects endogenous levels of CHST2 protein.
<b>Formulation</b>	Liquid in PBS containing 50% glycerol, 0.5% BSA and 0.02% sodium azide.
<b>Storage</b>	Store at -20°C. Avoid repeated freeze-thaw cycles.
<b>Protein Name</b>	Carbohydrate sulfotransferase 2
<b>Gene Name</b>	CHST2
<b>Cellular localization</b>	Golgi apparatus, trans-Golgi network membrane ; Single-pass type II membrane protein .
<b>Purification</b>	The antibody was affinity-purified from rabbit antiserum by affinity-chromatography using epitope-specific immunogen.
<b>Clonality</b>	Polyclonal
<b>Concentration</b>	1 mg/ml
<b>Observed band</b>	58kD
<b>Human Gene ID</b>	9435
<b>Human Swiss-Prot Number</b>	Q9Y4C5
<b>Alternative Names</b>	CHST2; GN6ST; Carbohydrate sulfotransferase 2; Galactose/N-acetylglucosamine/N-acetylglucosamine 6-O-sulfotransferase 2; GST-2; N-acetylglucosamine 6-O-sulfotransferase 1; GlcNAc6ST-1; Gn6ST-1
<b>Background</b>	This locus encodes a sulfotransferase protein. The encoded enzyme catalyzes the sulfation of a nonreducing N-acetylglucosamine residue, and may play a role in biosynthesis of 6-sulfosialyl Lewis X



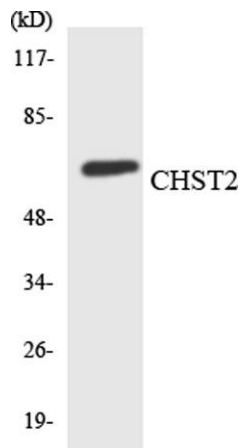


antigen. [provided by RefSeq, Aug 2011],

Western Blot analysis of various cells using CHST2 Polyclonal Antibody



Western blot analysis of lysates from A549, COLO, and Jurkat cells, using CHST2 Antibody. The lane on the right is blocked with the synthesized peptide.



Western blot analysis of the lysates from K562 cells using CHST2 antibody.

