



# Che-1 rabbit pAb

Cat No.:ES1967

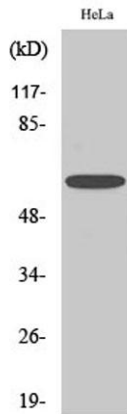
For research use only

## Overview

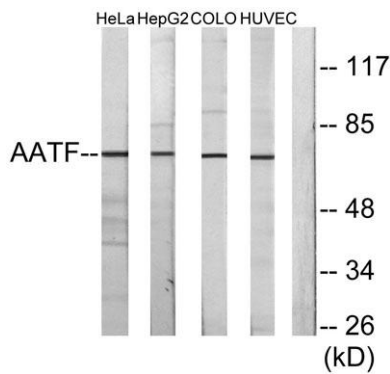
<b>Product Name</b>	Che-1 rabbit pAb
<b>Host species</b>	Rabbit
<b>Applications</b>	WB;IHC;IF;ELISA
<b>Species Cross-Reactivity</b>	Human;Mouse;Rat
<b>Recommended dilutions</b>	Western Blot: 1/500 - 1/2000. Immunohistochemistry: 1/100 - 1/300. ELISA: 1/10000. Not yet tested in other applications.
<b>Immunogen</b>	The antiserum was produced against synthesized peptide derived from human AATF. AA range:10-59
<b>Specificity</b>	Che-1 Polyclonal Antibody detects endogenous levels of Che-1 protein.
<b>Formulation</b>	Liquid in PBS containing 50% glycerol, 0.5% BSA and 0.02% sodium azide.
<b>Storage</b>	Store at -20°C. Avoid repeated freeze-thaw cycles.
<b>Protein Name</b>	Protein AATF
<b>Gene Name</b>	AATF
<b>Cellular localization</b>	Nucleus, nucleolus .
<b>Purification</b>	The antibody was affinity-purified from rabbit antiserum by affinity-chromatography using epitope-specific immunogen.
<b>Clonality</b>	Polyclonal
<b>Concentration</b>	1 mg/ml
<b>Observed band</b>	63kD
<b>Human Gene ID</b>	26574
<b>Human Swiss-Prot Number</b>	Q9NY61
<b>Alternative Names</b>	AATF; CHE1; DED; HSPC277; Protein AATF; Apoptosis-antagonizing transcription factor; Rb-binding protein Che-1
<b>Background</b>	The protein encoded by this gene was identified on the basis of its interaction with MAP3K12/DLK, a protein kinase known to be involved in the induction of cell apoptosis. This gene product contains a leucine zipper, which is a characteristic motif of



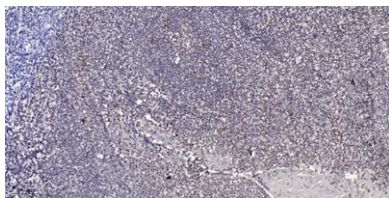
transcription factors, and was shown to exhibit strong transactivation activity when fused to Gal4 DNA binding domain. Overexpression of this gene interfered with MAP3K12 induced apoptosis. [provided by RefSeq, Jul 2008],



Western Blot analysis of various cells using Che-1 Polyclonal Antibody



Western blot analysis of lysates from HeLa cells, HepG2 cells, COLO205 cells, and HUVEC cells, using AATF Antibody. The lane on the right is blocked with the synthesized peptide.



Immunohistochemical analysis of paraffin-embedded human tonsil. 1, Antibody was diluted at 1:200(4° overnight). 2, Tris-EDTA,pH9.0 was used for antigen retrieval. 3,Secondary antibody was diluted at 1:200(room temperature, 45min).

