



CdcA3 rabbit pAb

Cat No.:ES1935

For research use only

Overview

Product Name	CdcA3 rabbit pAb
Host species	Rabbit
Applications	WB;IHC;IF;ELISA
Species Cross-Reactivity	Human;Mouse;Rat
Recommended dilutions	Western Blot: 1/500 - 1/2000. Immunohistochemistry: 1/100 - 1/300. Immunofluorescence: 1/200 - 1/1000. ELISA: 1/5000. Not yet tested in other applications.
Immunogen	The antiserum was produced against synthesized peptide derived from human CDCA3. AA range:219-268
Specificity	CdcA3 Polyclonal Antibody detects endogenous levels of CdcA3 protein.
Formulation	Liquid in PBS containing 50% glycerol, 0.5% BSA and 0.02% sodium azide.
Storage	Store at -20°C. Avoid repeated freeze-thaw cycles.
Protein Name	Cell division cycle-associated protein 3
Gene Name	CDCA3
Cellular localization	Cytoplasm, cytosol .
Purification	The antibody was affinity-purified from rabbit antiserum by affinity-chromatography using epitope-specific immunogen.
Clonality	Polyclonal
Concentration	1 mg/ml
Observed band	28kD
Human Gene ID	83461
Human Swiss-Prot Number	Q99618
Alternative Names	CDCA3; C8; GRCC8; TOME1; Cell division cycle-associated protein 3; Gene-rich cluster protein C8; Trigger of mitotic entry protein 1; TOME-1 domain:The KEN box is required for the association with the APC/C-Cdh1 complex.,function:F-box-like protein which is required for entry into mitosis. Acts
Background	



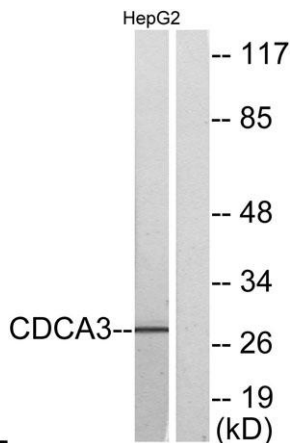
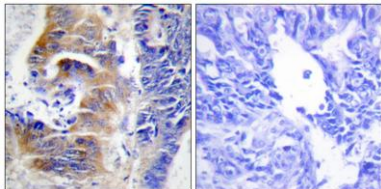


by participating to E3 ligase complexes that mediate the ubiquitination and degradation of WEE1 kinase at G2/M phase.,pathway:Protein modification; protein ubiquitination.,PTM:Phosphorylated upon DNA damage, probably by ATM or ATR.,PTM:Ubiquitinated and degraded by the APC/C-Cdh1 complex.,subunit:Interacts with SKP1A. Part of a SCF (SKP1-cullin-F-box) protein ligase complex.,



Western Blot analysis of various cells using CdcA3 Polyclonal Antibody

Immunohistochemistry analysis of paraffin-embedded human colon carcinoma tissue, using CDCA3 Antibody. The picture on the right is blocked with the synthesized peptide.



Western blot analysis of lysates from HepG2 cells, using CDCA3 Antibody. The lane on the right is blocked with the synthesized peptide.





ELK Biotechnology



+86-27-59760950

ELKbio@ELKbiotech.com

www.elkbiotech.com

23-2, No.388 Gaoxin 2nd Road,Wuhan East Lake Hi-tech Development Zone, Hubei , P.R.C