



# Cdc23 rabbit pAb

Cat No.:ES1925

For research use only

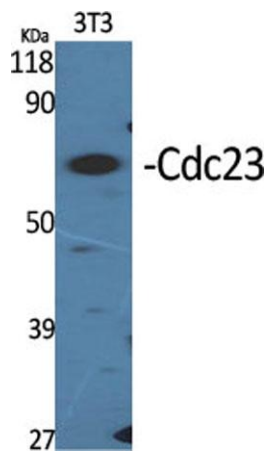
## Overview

<b>Product Name</b>	Cdc23 rabbit pAb
<b>Host species</b>	Rabbit
<b>Applications</b>	WB;ELISA
<b>Species Cross-Reactivity</b>	Human;Mouse;Monkey
<b>Recommended dilutions</b>	Western Blot: 1/500 - 1/2000. ELISA: 1/20000. Not yet tested in other applications.
<b>Immunogen</b>	The antiserum was produced against synthesized peptide derived from human APC8. AA range:251-300
<b>Specificity</b>	Cdc23 Polyclonal Antibody detects endogenous levels of Cdc23 protein.
<b>Formulation</b>	Liquid in PBS containing 50% glycerol, 0.5% BSA and 0.02% sodium azide.
<b>Storage</b>	Store at -20°C. Avoid repeated freeze-thaw cycles.
<b>Protein Name</b>	Cell division cycle protein 23 homolog
<b>Gene Name</b>	CDC23
<b>Cellular localization</b>	intracellular,nucleoplasm,anaphase-promoting complex,cytosol,
<b>Purification</b>	The antibody was affinity-purified from rabbit antiserum by affinity-chromatography using epitope-specific immunogen.
<b>Clonality</b>	Polyclonal
<b>Concentration</b>	1 mg/ml
<b>Observed band</b>	69kD
<b>Human Gene ID</b>	8697
<b>Human Swiss-Prot Number</b>	Q9UJX2
<b>Alternative Names</b>	CDC23; ANAPC8; Cell division cycle protein 23 homolog; Anaphase-promoting complex subunit 8; APC8; Cyclosome subunit 8
<b>Background</b>	The protein encoded by this gene shares strong similarity with <i>Saccharomyces cerevisiae</i> Cdc23, a protein essential for cell cycle progression through the G2/M transition. This protein is a component of

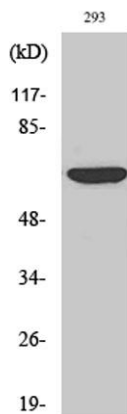




anaphase-promoting complex (APC), which is composed of eight protein subunits and highly conserved in eukaryotic cells. APC catalyzes the formation of cyclin B-ubiquitin conjugate that is responsible for the ubiquitin-mediated proteolysis of B-type cyclins. This protein and 3 other members of the APC complex contain the TPR (tetratricopeptide repeat), a protein domain important for protein-protein interaction. [provided by RefSeq, Jul 2008],



Western Blot analysis of various cells using Cdc23 Polyclonal Antibody diluted at 1:2000



Western Blot analysis of COS7 cells using Cdc23 Polyclonal Antibody diluted at 1:2000

