



# Cdc2 rabbit pAb

Cat No.:ES1923

For research use only

## Overview

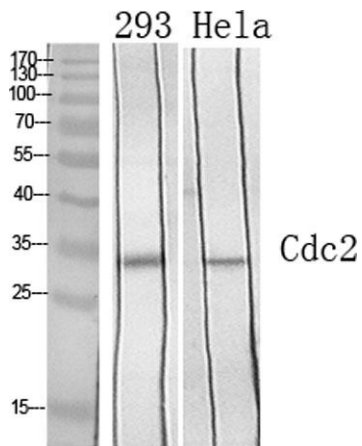
<b>Product Name</b>	Cdc2 rabbit pAb
<b>Host species</b>	Rabbit
<b>Applications</b>	WB;IP;ELISA
<b>Species Cross-Reactivity</b>	Human;Mouse;Rat
<b>Recommended dilutions</b>	Western Blot: 1/500 - 1/2000. IP 1:50-200 ELISA: 1/10000. Not yet tested in other applications.
<b>Immunogen</b>	The antiserum was produced against synthesized peptide derived from human CDC2. AA range:131-180
<b>Specificity</b>	Cdc2 Polyclonal Antibody detects endogenous levels of Cdc2 protein.
<b>Formulation</b>	Liquid in PBS containing 50% glycerol, 0.5% BSA and 0.02% sodium azide.
<b>Storage</b>	Store at -20°C. Avoid repeated freeze-thaw cycles.
<b>Protein Name</b>	Cyclin-dependent kinase 1
<b>Gene Name</b>	CDK1
<b>Cellular localization</b>	Nucleus. Cytoplasm. Mitochondrion . Cytoplasm, cytoskeleton, microtubule organizing center, centrosome . Cytoplasm, cytoskeleton, spindle. Cytoplasmic during the interphase. Colocalizes with SIRT2 on centrosome during prophase and on spindle fibers durin
<b>Purification</b>	The antibody was affinity-purified from rabbit antiserum by affinity-chromatography using epitope-specific immunogen.
<b>Clonality</b>	Polyclonal
<b>Concentration</b>	1 mg/ml
<b>Observed band</b>	34kD
<b>Human Gene ID</b>	983
<b>Human Swiss-Prot Number</b>	P06493
<b>Alternative Names</b>	CDK1; CDC2; CDC28A; CDKN1; P34CDC2; Cyclin-dependent kinase 1; CDK1; Cell division control protein 2 homolog; Cell division protein





## Background

kinase 1; p34 protein kinase  
cyclin dependent kinase 1(CDK1) Homo sapiens  
The protein encoded by this gene is a member of the Ser/Thr protein kinase family. This protein is a catalytic subunit of the highly conserved protein kinase complex known as M-phase promoting factor (MPF), which is essential for G1/S and G2/M phase transitions of eukaryotic cell cycle. Mitotic cyclins stably associate with this protein and function as regulatory subunits. The kinase activity of this protein is controlled by cyclin accumulation and destruction through the cell cycle. The phosphorylation and dephosphorylation of this protein also play important regulatory roles in cell cycle control. Alternatively spliced transcript variants encoding different isoforms have been found for this gene. [provided by RefSeq, Mar 2009],



Western Blot analysis of various cells using Cdc2  
Polyclonal Antibody diluted at 1:1000

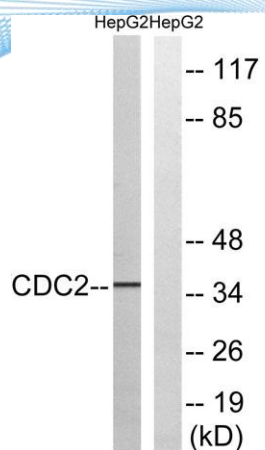


Western Blot analysis of HepG2 cells using Cdc2  
Polyclonal Antibody diluted at 1:1000





**ELK Biotechnology**



Western blot analysis of lysates from HepG2 cells, using CDC2 Antibody. The lane on the right is blocked with the synthesized peptide.



+86-27-59760950

[ELKbio@ELKbiotech.com](mailto:ELKbio@ELKbiotech.com)

[www.elkbiotech.com](http://www.elkbiotech.com)

23-2, No.388 Gaoxin 2nd Road,Wuhan East Lake Hi-tech Development Zone, Hubei , P.R.C