

CD71/TfR rabbit pAb

Cat No.:ES1916

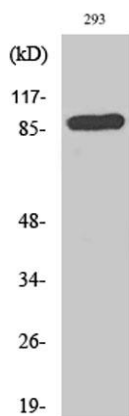
For research use only

Overview

Product Name	CD71/TfR rabbit pAb
Host species	Rabbit
Applications	WB;IHC;IF;ELISA
Species Cross-Reactivity	Human;Mouse
Recommended dilutions	Western Blot: 1/500 - 1/2000. Immunohistochemistry: 1/100 - 1/300. ELISA: 1/10000. Not yet tested in other applications.
Immunogen	The antiserum was produced against synthesized peptide derived from human CD71/TfR. AA range:15-64
Specificity	CD71 Polyclonal Antibody detects endogenous levels of CD71 protein.
Formulation	Liquid in PBS containing 50% glycerol, 0.5% BSA and 0.02% sodium azide.
Storage	Store at -20°C. Avoid repeated freeze-thaw cycles.
Protein Name	Transferrin receptor protein 1
Gene Name	TFRC
Cellular localization	Cell membrane ; Single-pass type II membrane protein . Melanosome . Identified by mass spectrometry in melanosome fractions from stage I to stage IV. .; [Transferrin receptor protein 1, serum form]: Secreted .
Purification	The antibody was affinity-purified from rabbit antiserum by affinity-chromatography using epitope-specific immunogen.
Clonality	Polyclonal
Concentration	1 mg/ml
Observed band	89kD
Human Gene ID	7037
Human Swiss-Prot Number	P02786
Alternative Names	TFRC; Transferrin receptor protein 1; TR; TfR; TfR1; Trfr; T9; p90; CD antigen CD71
Background	This gene encodes a cell surface receptor necessary

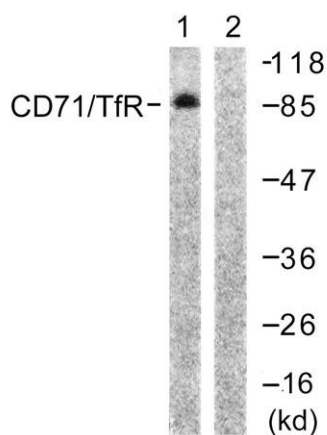
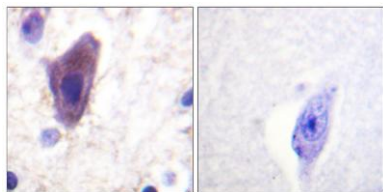


for cellular iron uptake by the process of receptor-mediated endocytosis. This receptor is required for erythropoiesis and neurologic development. Multiple alternatively spliced variants have been identified. [provided by RefSeq, Sep 2015],



Western Blot analysis of various cells using CD71
Polyclonal Antibody diluted at 1:2000

Immunohistochemistry analysis of paraffin-embedded human brain tissue, using CD71/TfR Antibody. The picture on the right is blocked with the synthesized peptide.



Western blot analysis of lysates from 293 cells, treated with PMA 125ng/ml 30', using CD71/TfR Antibody. The lane on the right is blocked with the synthesized peptide.

