



# CD108 rabbit pAb

Cat No.:ES1893

For research use only

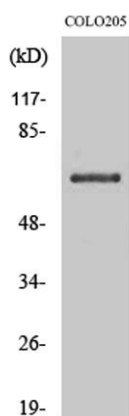
## Overview

<b>Product Name</b>	CD108 rabbit pAb
<b>Host species</b>	Rabbit
<b>Applications</b>	WB;ELISA
<b>Species Cross-Reactivity</b>	Human;Mouse;Rat
<b>Recommended dilutions</b>	Western Blot: 1/500 - 1/2000. ELISA: 1/5000. Not yet tested in other applications.
<b>Immunogen</b>	Synthesized peptide derived from CD108 . at AA range: 150-230
<b>Specificity</b>	CD108 Polyclonal Antibody detects endogenous levels of CD108 protein.
<b>Formulation</b>	Liquid in PBS containing 50% glycerol, 0.5% BSA and 0.02% sodium azide.
<b>Storage</b>	Store at -20°C. Avoid repeated freeze-thaw cycles.
<b>Protein Name</b>	Semaphorin-7A
<b>Gene Name</b>	SEMA7A
<b>Cellular localization</b>	Cell membrane ; Lipid-anchor, GPI-anchor ; Extracellular side . Detected in a punctate pattern on the cell membrane of basal and supra-basal skin keratinocytes.
<b>Purification</b>	The antibody was affinity-purified from rabbit antiserum by affinity-chromatography using epitope-specific immunogen.
<b>Clonality</b>	Polyclonal
<b>Concentration</b>	1 mg/ml
<b>Observed band</b>	75kD
<b>Human Gene ID</b>	8482
<b>Human Swiss-Prot Number</b>	O75326
<b>Alternative Names</b>	SEMA7A; CD108; SEMAL; Semaphorin-7A; CDw108; JMH blood group antigen; John-Milton-Hargen human blood group Ag; Semaphorin-K1; Sema K1; Semaphorin-L; Sema L; CD antigen CD108
<b>Background</b>	This gene encodes a member of the semaphorin family of proteins. The encoded preproprotein is





proteolytically processed to generate the mature glycosylphosphatidylinositol (GPI)-anchored membrane glycoprotein. The encoded protein is found on activated lymphocytes and erythrocytes and may be involved in immunomodulatory and neuronal processes. The encoded protein carries the John Milton Hagen (JMh) blood group antigens. Mutations in this gene may be associated with reduced bone mineral density (BMD). Alternative splicing results in multiple transcript variants, at least one of which encodes an isoform that is proteolytically processed. [provided by RefSeq, Feb 2016],



Western Blot analysis of various cells using CD108 Polyclonal Antibody

