

CCDC45 rabbit pAb

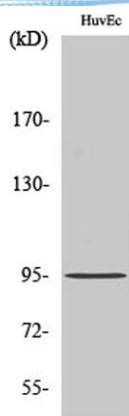
Cat No.:ES1887

For research use only

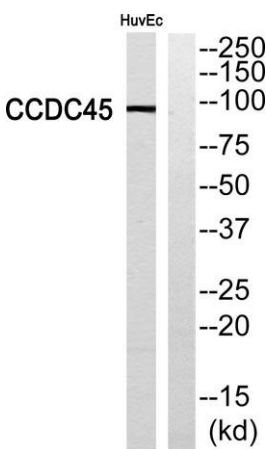
Overview

Product Name	CCDC45 rabbit pAb
Host species	Rabbit
Applications	WB;ELISA
Species Cross-Reactivity	Human;Mouse;Rat
Recommended dilutions	Western Blot: 1/500 - 1/2000. ELISA: 1/40000. Not yet tested in other applications.
Immunogen	The antiserum was produced against synthesized peptide derived from human CCDC45. AA range:591-640
Specificity	CCDC45 Polyclonal Antibody detects endogenous levels of CCDC45 protein.
Formulation	Liquid in PBS containing 50% glycerol, 0.5% BSA and 0.02% sodium azide.
Storage	Store at -20°C. Avoid repeated freeze-thaw cycles.
Protein Name	Centrosomal protein of 95 kDa
Gene Name	CEP95
Cellular localization	Cytoplasm, cytoskeleton, microtubule organizing center, centrosome . Cytoplasm, cytoskeleton, spindle pole .
Purification	The antibody was affinity-purified from rabbit antiserum by affinity-chromatography using epitope-specific immunogen.
Clonality	Polyclonal
Concentration	1 mg/ml
Observed band	95kD
Human Gene ID	90799
Human Swiss-Prot Number	Q96GE4
Alternative Names	CEP95; CCDC45; CEP45; Centrosomal protein of 95 kDa; Coiled-coil domain-containing protein 45
Background	PTM:Phosphorylated upon DNA damage, probably by ATM or ATR.,

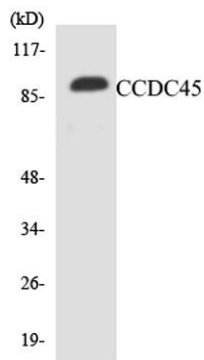




Western Blot analysis of various cells using CCDC45 Polyclonal Antibody



Western blot analysis of CCDC45 Antibody. The lane on the right is blocked with the CCDC45 peptide.



Western blot analysis of the lysates from Jurkat cells using CCDC45 antibody.

