



Cathepsin D rabbit pAb

Cat No.:ES1870

For research use only

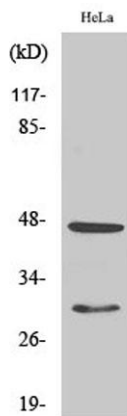
Overview

Product Name	Cathepsin D rabbit pAb
Host species	Rabbit
Applications	WB;IHC;IF;ELISA
Species Cross-Reactivity	Human;Rat;Mouse;
Recommended dilutions	Western Blot: 1/500 - 1/2000. Immunohistochemistry: 1/100 - 1/300. ELISA: 1/40000. Not yet tested in other applications.
Immunogen	The antiserum was produced against synthesized peptide derived from human Cathepsin D. AA range:296-345
Specificity	Cathepsin D Polyclonal Antibody detects endogenous levels of Cathepsin D protein.
Formulation	Liquid in PBS containing 50% glycerol, 0.5% BSA and 0.02% sodium azide.
Storage	Store at -20°C. Avoid repeated freeze-thaw cycles.
Protein Name	Cathepsin D
Gene Name	CTSD
Cellular localization	Lysosome. Melanosome. Secreted, extracellular space. Identified by mass spectrometry in melanosome fractions from stage I to stage IV. In aortic samples, detected as an extracellular protein loosely bound to the matrix (PubMed:20551380).
Purification	The antibody was affinity-purified from rabbit antiserum by affinity-chromatography using epitope-specific immunogen.
Clonality	Polyclonal
Concentration	1 mg/ml
Observed band	46,30kD
Human Gene ID	1509
Human Swiss-Prot Number	P07339
Alternative Names	CTSD; CPSD; Cathepsin D
Background	This gene encodes a member of the A1 family of peptidases. The encoded preproprotein is



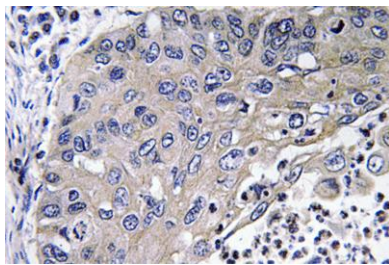


proteolytically processed to generate multiple protein products. These products include the cathepsin D light and heavy chains, which heterodimerize to form the mature enzyme. This enzyme exhibits pepsin-like activity and plays a role in protein turnover and in the proteolytic activation of hormones and growth factors. Mutations in this gene play a causal role in neuronal ceroid lipofuscinosis-10 and may be involved in the pathogenesis of several other diseases, including breast cancer and possibly Alzheimer's disease. [provided by RefSeq, Nov 2015],



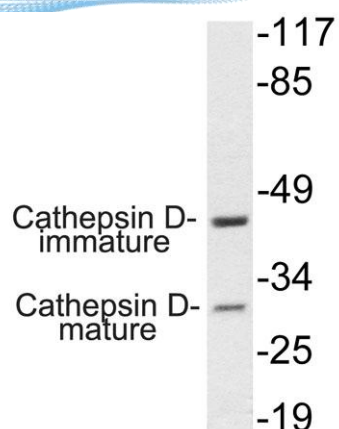
Western Blot analysis of various cells using Cathepsin D Polyclonal Antibody

Immunohistochemistry analysis of Cathepsin D antibody in paraffin-embedded human lung carcinoma tissue.





ELK Biotechnology



Western blot analysis of lysate from HepG2 cells, using Cathepsin D antibody.



+86-27-59760950

ELKbio@ELKbiotech.com

www.elkbiotech.com

23-2, No.388 Gaoxin 2nd Road, Wuhan East Lake Hi-tech Development Zone, Hubei, P.R.C.