



# Casein Kinase II $\alpha$ rabbit pAb

Cat No.:ES1845

For research use only

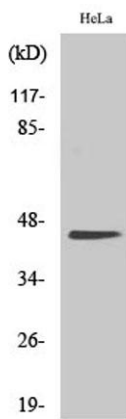
## Overview

<b>Product Name</b>	Casein Kinase II $\alpha$ rabbit pAb
<b>Host species</b>	Rabbit
<b>Applications</b>	WB;IHC;IF;ELISA
<b>Species Cross-Reactivity</b>	Human;Mouse;Rat
<b>Recommended dilutions</b>	Western Blot: 1/500 - 1/2000. Immunohistochemistry: 1/100 - 1/300. ELISA: 1/10000. Not yet tested in other applications.
<b>Immunogen</b>	The antiserum was produced against synthesized peptide derived from human Casein Kinase II alpha. AA range:221-270
<b>Specificity</b>	Casein Kinase II $\alpha$ Polyclonal Antibody detects endogenous levels of Casein Kinase II $\alpha$ protein.
<b>Formulation</b>	Liquid in PBS containing 50% glycerol, 0.5% BSA and 0.02% sodium azide.
<b>Storage</b>	Store at -20°C. Avoid repeated freeze-thaw cycles.
<b>Protein Name</b>	Casein kinase II subunit alpha
<b>Gene Name</b>	CSNK2A1
<b>Cellular localization</b>	Nucleus .
<b>Purification</b>	The antibody was affinity-purified from rabbit antiserum by affinity-chromatography using epitope-specific immunogen.
<b>Clonality</b>	Polyclonal
<b>Concentration</b>	1 mg/ml
<b>Observed band</b>	45kD
<b>Human Gene ID</b>	1457
<b>Human Swiss-Prot Number</b>	P68400
<b>Alternative Names</b>	CSNK2A1; CK2A1; Casein kinase II subunit alpha; CK II alpha
<b>Background</b>	Casein kinase II is a serine/threonine protein kinase that phosphorylates acidic proteins such as casein. It is involved in various cellular processes, including cell cycle control, apoptosis, and circadian rhythm. The kinase exists as a tetramer and is composed of

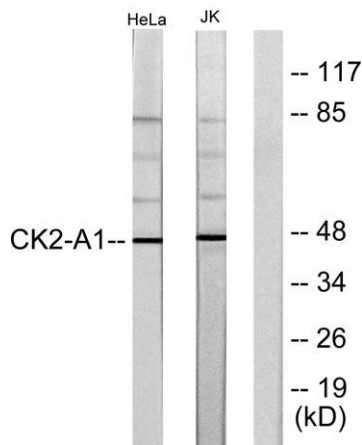




an alpha, an alpha-prime, and two beta subunits. The alpha subunits contain the catalytic activity while the beta subunits undergo autophosphorylation. The protein encoded by this gene represents the alpha subunit. While this gene is found on chromosome 20, a related transcribed pseudogene is found on chromosome 11. Three transcript variants encoding two different proteins have been found for this gene. [provided by RefSeq, Jul 2014],

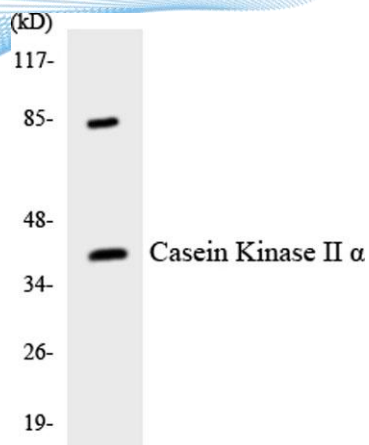


Western Blot analysis of various cells using Casein Kinase II $\alpha$  Polyclonal Antibody cells nucleus extracted by Minute TM Cytoplasmic and Nuclear Fractionation kit (SC-003, Inventbiotech, MN, USA).

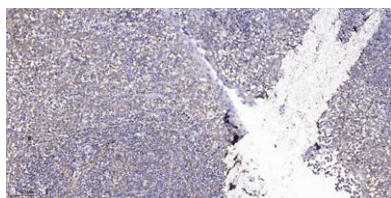


Western blot analysis of lysates from HeLa and Jurkat cells, using Casein Kinase II alpha Antibody. The lane on the right is blocked with the synthesized peptide.





Western blot analysis of the lysates from 293 cells using Casein Kinase II  $\alpha$  antibody.



Immunohistochemical analysis of paraffin-embedded human tonsil. 1, Antibody was diluted at 1:200(4° overnight). 2, Tris-EDTA,pH9.0 was used for antigen retrieval. 3,Secondary antibody was diluted at 1:200(room temperature, 45min).

