



# CAR rabbit pAb

Cat No.:ES1837

For research use only

## Overview

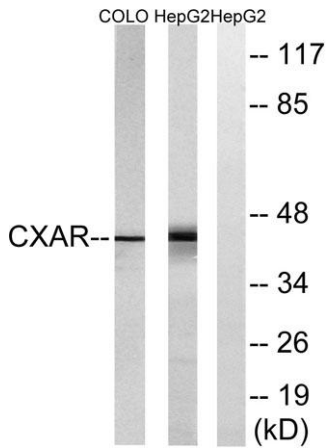
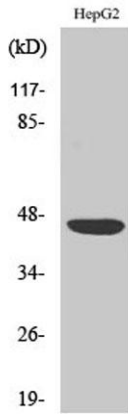
<b>Product Name</b>	CAR rabbit pAb
<b>Host species</b>	Rabbit
<b>Applications</b>	WB;ELISA
<b>Species Cross-Reactivity</b>	Human;Mouse;Rat
<b>Recommended dilutions</b>	Western Blot: 1/500 - 1/2000. ELISA: 1/20000. Not yet tested in other applications.
<b>Immunogen</b>	The antiserum was produced against synthesized peptide derived from human CXADR. AA range:1-50
<b>Specificity</b>	CAR Polyclonal Antibody detects endogenous levels of CAR protein.
<b>Formulation</b>	Liquid in PBS containing 50% glycerol, 0.5% BSA and 0.02% sodium azide.
<b>Storage</b>	Store at -20°C. Avoid repeated freeze-thaw cycles.
<b>Protein Name</b>	Coxsackievirus and adenovirus receptor
<b>Gene Name</b>	CXADR
<b>Cellular localization</b>	[Isoform 1]: Cell membrane ; Single-pass type I membrane protein . Basolateral cell membrane ; Single-pass type I membrane protein . Cell junction, tight junction . Cell junction, adherens junction . In epithelial cells localizes to the apical junction co
<b>Purification</b>	The antibody was affinity-purified from rabbit antiserum by affinity-chromatography using epitope-specific immunogen.
<b>Clonality</b>	Polyclonal
<b>Concentration</b>	1 mg/ml
<b>Observed band</b>	40kD
<b>Human Gene ID</b>	1525
<b>Human Swiss-Prot Number</b>	P78310
<b>Alternative Names</b>	CXADR; CAR; Coxsackievirus and adenovirus receptor; CAR; hCAR; CVB3-binding protein; Coxsackievirus B-adenovirus receptor; HCVADR
<b>Background</b>	The protein encoded by this gene is a type I membrane receptor for group B coxsackieviruses



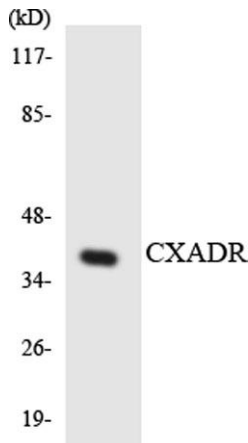


and subgroup C adenoviruses. Several transcript variants encoding different isoforms have been found for this gene. Pseudogenes of this gene are found on chromosomes 15, 18, and 21. [provided by RefSeq, May 2011],

Western Blot analysis of various cells using CAR Polyclonal Antibody



Western blot analysis of lysates from HepG2 and COLO cells, using CXADR Antibody. The lane on the right is blocked with the synthesized peptide.



Western blot analysis of the lysates from HeLa cells using CXADR antibody.

