



Calpain 12 rabbit pAb

Cat No.:ES1832

For research use only

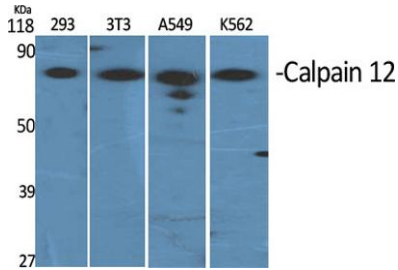
Overview

| | |
|---------------------------------|--|
| Product Name | Calpain 12 rabbit pAb |
| Host species | Rabbit |
| Applications | WB;ELISA |
| Species Cross-Reactivity | Human;Rat;Mouse; |
| Recommended dilutions | Western Blot: 1/500 - 1/2000. ELISA: 1/5000. Not yet tested in other applications. |
| Immunogen | The antiserum was produced against synthesized peptide derived from human CAPN12. AA range:221-270 |
| Specificity | Calpain 12 Polyclonal Antibody detects endogenous levels of Calpain 12 protein. |
| Formulation | Liquid in PBS containing 50% glycerol, 0.5% BSA and 0.02% sodium azide. |
| Storage | Store at -20°C. Avoid repeated freeze-thaw cycles. |
| Protein Name | Calpain-12 |
| Gene Name | CAPN12 |
| Cellular localization | intracellular,cytoplasm, |
| Purification | The antibody was affinity-purified from rabbit antiserum by affinity-chromatography using epitope-specific immunogen. |
| Clonality | Polyclonal |
| Concentration | 1 mg/ml |
| Observed band | 80kD |
| Human Gene ID | 147968 |
| Human Swiss-Prot Number | Q6ZSI9 |
| Alternative Names | CAPN12; Calpain-12; Calcium-activated neutral proteinase 12; CANP 12 |
| Background | The calpains, calcium-activated neutral proteases, are nonlysosomal, intracellular cysteine proteases. The mammalian calpains include ubiquitous, stomach-specific, and muscle-specific proteins. The ubiquitous enzymes consist of heterodimers with distinct large, catalytic subunits associated with a |

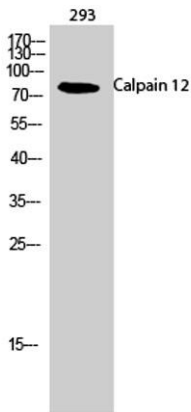


common small, regulatory subunit. This gene encodes a member of the calpain large subunit family. [provided by RefSeq, Jun 2012],

Western Blot analysis of various cells using Calpain 12 Polyclonal Antibody



Western Blot analysis of 293 cells using Calpain 12 Polyclonal Antibody



Western blot analysis of the lysates from K562 cells using CAPN12 antibody.

