

CAGE-1 rabbit pAb

Cat No.:ES1828

For research use only

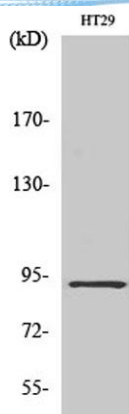
Overview

Product Name	CAGE-1 rabbit pAb
Host species	Rabbit
Applications	WB;IHC;IF;ELISA
Species Cross-Reactivity	Human;Rat;Mouse;
Recommended dilutions	Western Blot: 1/500 - 1/2000. Immunohistochemistry: 1/100 - 1/300. ELISA: 1/40000. Not yet tested in other applications.
Immunogen	The antiserum was produced against synthesized peptide derived from human CAGE1. AA range:711-760
Specificity	CAGE-1 Polyclonal Antibody detects endogenous levels of CAGE-1 protein.
Formulation	Liquid in PBS containing 50% glycerol, 0.5% BSA and 0.02% sodium azide.
Storage	Store at -20°C. Avoid repeated freeze-thaw cycles.
Protein Name	Cancer-associated gene 1 protein
Gene Name	CAGE1
Cellular localization	
Purification	The antibody was affinity-purified from rabbit antiserum by affinity-chromatography using epitope-specific immunogen.
Clonality	Polyclonal
Concentration	1 mg/ml
Observed band	90kD
Human Gene ID	285782
Human Swiss-Prot Number	Q8TC20
Alternative Names	CAGE1; CTAG3; Cancer-associated gene 1 protein; CAGE-1; Cancer/testis antigen 3; CT3
Background	tissue specificity:Testis-specific expression in normal tissues, but wide expression among cancer tissues and cell lines.,



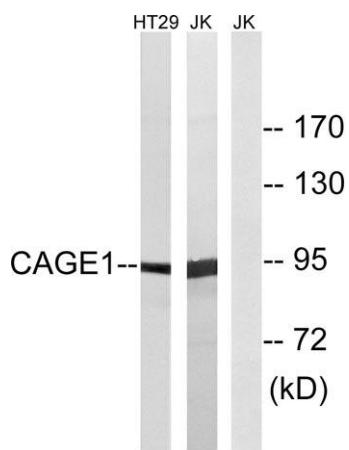
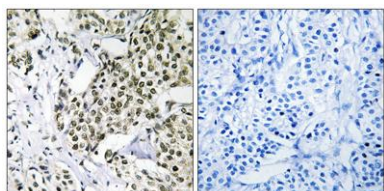


ELK Biotechnology



Western Blot analysis of various cells using CAGE-1
Polyclonal Antibody diluted at 1:2000

Immunohistochemistry analysis of paraffin-embedded
human breast carcinoma tissue, using CAGE1 Antibody.
The picture on the right is blocked with the synthesized
peptide.



Western blot analysis of lysates from HT-29 and Jurkat
cells, using CAGE1 Antibody. The lane on the right is
blocked with the synthesized peptide.



+86-27-59760950

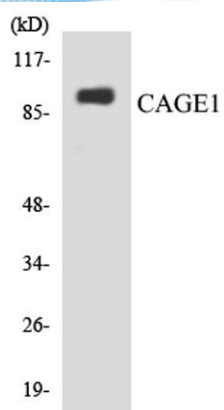
ELKbio@ELKbiotech.com

www.elkbiotech.com

23-2, No.388 Gaoxin 2nd Road, Wuhan East Lake Hi-tech Development Zone, Hubei, P.R.C.



ELK Biotechnology



Western blot analysis of the lysates from HepG2 cells using CAGE1 antibody.



+86-27-59760950

ELKbio@ELKbiotech.com

www.elkbiotech.com

23-2, No.388 Gaoxin 2nd Road,Wuhan East Lake Hi-tech Development Zone, Hubei , P.R.C