



# Cadherin-26 rabbit pAb

Cat No.:ES1825

For research use only

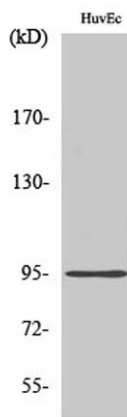
## Overview

<b>Product Name</b>	Cadherin-26 rabbit pAb
<b>Host species</b>	Rabbit
<b>Applications</b>	WB;IF;ELISA
<b>Species Cross-Reactivity</b>	Human;Rat;Mouse;
<b>Recommended dilutions</b>	Western Blot: 1/500 - 1/2000. Immunofluorescence: 1/200 - 1/1000. ELISA: 1/10000. Not yet tested in other applications.
<b>Immunogen</b>	The antiserum was produced against synthesized peptide derived from human CDH26. AA range:11-60
<b>Specificity</b>	Cadherin-26 Polyclonal Antibody detects endogenous levels of Cadherin-26 protein.
<b>Formulation</b>	Liquid in PBS containing 50% glycerol, 0.5% BSA and 0.02% sodium azide.
<b>Storage</b>	Store at -20°C. Avoid repeated freeze-thaw cycles.
<b>Protein Name</b>	Cadherin-like protein 26
<b>Gene Name</b>	CDH26
<b>Cellular localization</b>	Cell membrane ; Single-pass type I membrane protein .
<b>Purification</b>	The antibody was affinity-purified from rabbit antiserum by affinity-chromatography using epitope-specific immunogen.
<b>Clonality</b>	Polyclonal
<b>Concentration</b>	1 mg/ml
<b>Observed band</b>	95kD
<b>Human Gene ID</b>	60437
<b>Human Swiss-Prot Number</b>	Q8IXH8
<b>Alternative Names</b>	CDH26; Cadherin-like protein 26; Cadherin-like protein VR20
<b>Background</b>	Cadherins are a family of adhesion molecules that mediate Ca <sup>2+</sup> -dependent cell-cell adhesion in all solid tissues and modulate a wide variety of processes, including cell polarization and migration.





Cadherin domains occur as repeats in the extracellular region and are thought to contribute to the sorting of heterogeneous cell types and the maintenance of orderly structures such as epithelium. This gene encodes a cadherin domain-containing protein whose specific function has not yet been determined. Alternative splicing occurs at this locus and two transcript variants, encoding distinct proteins, have been identified. [provided by RefSeq, Jul 2008],



Western Blot analysis of various cells using Cadherin-26 Polyclonal Antibody

Immunofluorescence analysis of MCF7 cells, using CDH26 Antibody. The picture on the right is blocked with the synthesized peptide.

