



Cables1 rabbit pAb

Cat No.:ES1820

For research use only

Overview

Product Name	Cables1 rabbit pAb
Host species	Rabbit
Applications	WB;IHC;IF;ELISA
Species Cross-Reactivity	Human;Mouse
Recommended dilutions	Western Blot: 1/500 - 1/2000. Immunohistochemistry: 1/100 - 1/300. Immunofluorescence: 1/200 - 1/1000. ELISA: 1/20000. Not yet tested in other applications.
Immunogen	The antiserum was produced against synthesized peptide derived from human Ik3-1. AA range:561-610
Specificity	Cables1 Polyclonal Antibody detects endogenous levels of Cables1 protein.
Formulation	Liquid in PBS containing 50% glycerol, 0.5% BSA and 0.02% sodium azide.
Storage	Store at -20°C. Avoid repeated freeze-thaw cycles.
Protein Name	CDK5 and ABL1 enzyme substrate 1
Gene Name	CABLES1
Cellular localization	Nucleus . Cytoplasm . Located in the cell body and proximal region of the developing axonal shaft of immature neurons. Located in axonal growth cone, but not in the distal part of the axon shaft or in dendritic growth cone of mature neurons (By similarity)
Purification	The antibody was affinity-purified from rabbit antiserum by affinity-chromatography using epitope-specific immunogen.
Clonality	Polyclonal
Concentration	1 mg/ml
Observed band	67kD
Human Gene ID	91768
Human Swiss-Prot Number	Q8TDN4
Alternative Names	CABLES1; CABLES; CDK5 and ABL1 enzyme substrate

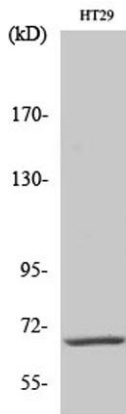




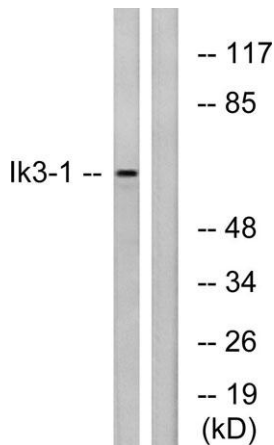
Background

1; Interactor with CDK3 1; Ik3-1

This gene encodes a protein involved in regulation of the cell cycle through interactions with several cyclin-dependent kinases. One study (PMID: 16177568) reported aberrant splicing of transcripts from this gene which results in removal of the cyclin binding domain only in human cancer cells, and reduction in gene expression was shown in colorectal cancers (PMID: 17982127). Multiple transcript variants encoding different isoforms have been found for this gene. [provided by RefSeq, Jan 2012],



Western Blot analysis of various cells using Cables1 Polyclonal Antibody diluted at 1:500

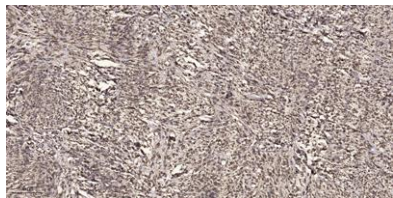


Western blot analysis of lysates from LOVO cells, using Ik3-1 Antibody. The lane on the right is blocked with the synthesized peptide.





ELK Biotechnology



Immunohistochemical analysis of paraffin-embedded human small intestinal carcinoma tissue. 1,primary Antibody was diluted at 1:200(4° overnight). 2, Sodium citrate pH 6.0 was used for antigen retrieval(>98°C,20min). 3,Secondary antibody was diluted at 1:2



+86-27-59760950

ELKbio@ELKbiotech.com

www.elkbiotech.com

23-2, No.388 Gaoxin 2nd Road,Wuhan East Lake Hi-tech Development Zone, Hubei , P.R.C