



# CA VI rabbit pAb

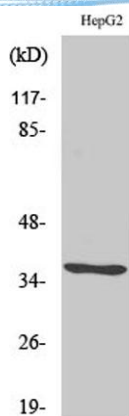
Cat No.:ES1814

For research use only

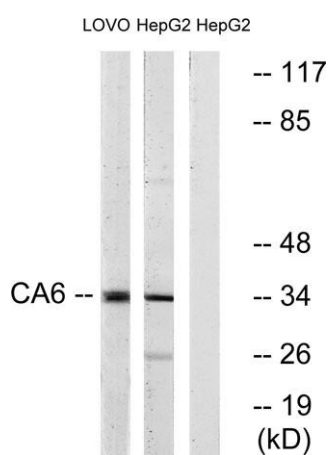
## Overview

<b>Product Name</b>	CA VI rabbit pAb
<b>Host species</b>	Rabbit
<b>Applications</b>	WB;ELISA
<b>Species Cross-Reactivity</b>	Human
<b>Recommended dilutions</b>	Western Blot: 1/500 - 1/2000. ELISA: 1/20000. Not yet tested in other applications.
<b>Immunogen</b>	The antiserum was produced against synthesized peptide derived from human CA6. AA range:231-280
<b>Specificity</b>	CA VI Polyclonal Antibody detects endogenous levels of CA VI protein.
<b>Formulation</b>	Liquid in PBS containing 50% glycerol, 0.5% BSA and 0.02% sodium azide.
<b>Storage</b>	Store at -20°C. Avoid repeated freeze-thaw cycles.
<b>Protein Name</b>	Carbonic anhydrase 6
<b>Gene Name</b>	CA6
<b>Cellular localization</b>	Secreted.
<b>Purification</b>	The antibody was affinity-purified from rabbit antiserum by affinity-chromatography using epitope-specific immunogen.
<b>Clonality</b>	Polyclonal
<b>Concentration</b>	1 mg/ml
<b>Observed band</b>	35kD
<b>Human Gene ID</b>	765
<b>Human Swiss-Prot Number</b>	P23280
<b>Alternative Names</b>	CA6; Carbonic anhydrase 6; Carbonate dehydratase VI; Carbonic anhydrase VI; CA-VI; Salivary carbonic anhydrase; Secreted carbonic anhydrase
<b>Background</b>	The protein encoded by this gene is one of several isozymes of carbonic anhydrase. This protein is found only in salivary glands and saliva and protein may play a role in the reversible hydration of carbon dioxide though its function in saliva is unknown. [provided by RefSeq, Jul 2008],

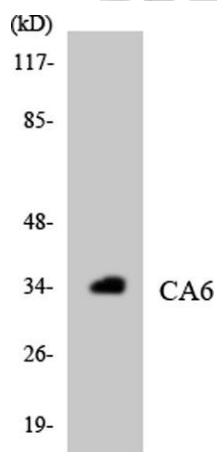




Western Blot analysis of various cells using CA VI Polyclonal Antibody



Western blot analysis of lysates from HepG2, and LOVO cells, using CA6 Antibody. The lane on the right is blocked with the synthesized peptide.



Western blot analysis of the lysates from HepG2 cells using CA6 antibody.

