



C6 rabbit pAb

Cat No.:ES1810

For research use only

Overview

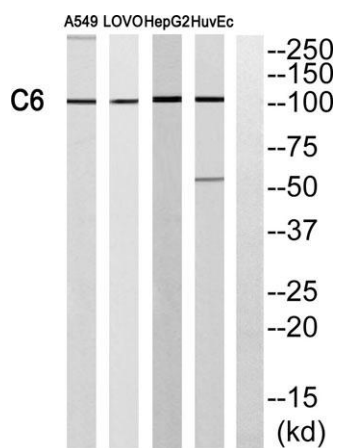
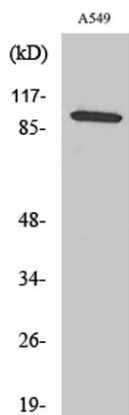
Product Name	C6 rabbit pAb
Host species	Rabbit
Applications	WB;IHC;IF;ELISA
Species Cross-Reactivity	Human;Rat
Recommended dilutions	Western Blot: 1/500 - 1/2000. Immunohistochemistry: 1/100 - 1/300. ELISA: 1/40000. Not yet tested in other applications.
Immunogen	The antiserum was produced against synthesized peptide derived from human C6. AA range:221-270
Specificity	C6 Polyclonal Antibody detects endogenous levels of C6 protein.
Formulation	Liquid in PBS containing 50% glycerol, 0.5% BSA and 0.02% sodium azide.
Storage	Store at -20°C. Avoid repeated freeze-thaw cycles.
Protein Name	Complement component C6
Gene Name	C6
Cellular localization	Secreted.
Purification	The antibody was affinity-purified from rabbit antiserum by affinity-chromatography using epitope-specific immunogen.
Clonality	Polyclonal
Concentration	1 mg/ml
Observed band	85-105kD
Human Gene ID	729
Human Swiss-Prot Number	P13671
Alternative Names	C6; Complement component C6
Background	This gene encodes a component of the complement cascade. The encoded protein is part of the membrane attack complex that can be incorporated into the cell membrane and cause cell lysis. Mutations in this gene are associated with complement component-6 deficiency. Transcript variants encoding the same protein have been





described.[provided by RefSeq, Nov 2012],

Western Blot analysis of various cells using C6 Polyclonal Antibody diluted at 1:1000



Western blot analysis of C6 Antibody. The lane on the right is blocked with the C6 peptide.

Immunohistochemistry analysis of paraffin-embedded human heart, using C6 Antibody. The lane on the right is blocked with the C6 peptide.

