

C1QBP rabbit pAb

Cat No.:ES1808

For research use only

Overview

Product Name	C1QBP rabbit pAb
Host species	Rabbit
Applications	WB;IHC;IF;ELISA
Species Cross-Reactivity	Human;Mouse;Rat
Recommended dilutions	Western Blot: 1/500 - 1/2000. Immunohistochemistry: 1/100 - 1/300. ELISA: 1/40000. Not yet tested in other applications.
Immunogen	The antiserum was produced against synthesized peptide derived from human C1QBP. AA range:61-110
Specificity	C1QBP Polyclonal Antibody detects endogenous levels of C1QBP protein.
Formulation	Liquid in PBS containing 50% glycerol, 0.5% BSA and 0.02% sodium azide.
Storage	Store at -20°C. Avoid repeated freeze-thaw cycles.
Protein Name	Complement component 1 Q subcomponent-binding protein mitochondrial C1QBP
Gene Name	C1QBP
Cellular localization	Mitochondrion matrix . Nucleus . Nucleus, nucleolus . Cell membrane ; Peripheral membrane protein ; Extracellular side. Secreted. Cytoplasm . Seems to be predominantly localized to mitochondria. Secreted by activated lymphocytes. Localizes to the nucleolu
Purification	The antibody was affinity-purified from rabbit antiserum by affinity-chromatography using epitope-specific immunogen.
Clonality	Polyclonal
Concentration	1 mg/ml
Observed band	32kD
Human Gene ID	708
Human Swiss-Prot Number	Q07021
Alternative Names	C1QBP; GC1QBP; HABP1; SF2P32; Complement





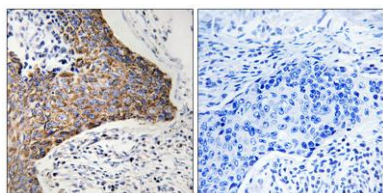
Background

component 1 Q subcomponent-binding protein;
mitochondrial; GC1q-R protein; Glycoprotein
gC1qBP; C1qBP; Hyaluronan-binding protein 1;
Mitochondrial matrix protein p32; p33

The human complement subcomponent C1q associates with C1r and C1s in order to yield the first component of the serum complement system. The protein encoded by this gene is known to bind to the globular heads of C1q molecules and inhibit C1 activation. This protein has also been identified as the p32 subunit of pre-mRNA splicing factor SF2, as well as a hyaluronic acid-binding protein. [provided by RefSeq, Jul 2008],

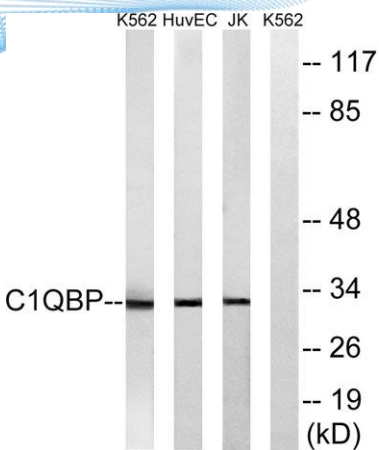


Western Blot analysis of various cells using C1QBP
Polyclonal Antibody diluted at 1:1000



Immunohistochemistry analysis of paraffin-embedded human tonsil tissue, using C1QBP Antibody. The picture on the right is blocked with the synthesized peptide.





Western blot analysis of lysates from Jurkat, HUVEC, and K562 cells, using C1QBP Antibody. The lane on the right is blocked with the synthesized peptide.

