



BST-1 rabbit pAb

Cat No.:ES1796

For research use only

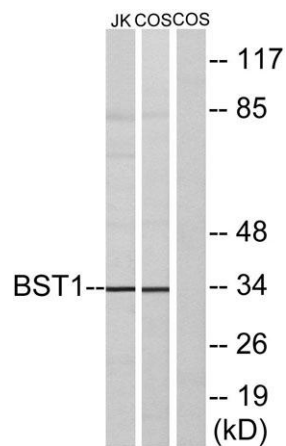
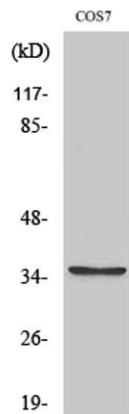
Overview

Product Name	BST-1 rabbit pAb
Host species	Rabbit
Applications	WB;ELISA
Species Cross-Reactivity	Human;Mouse;Rat;Monkey
Recommended dilutions	Western Blot: 1/500 - 1/2000. ELISA: 1/40000. Not yet tested in other applications.
Immunogen	The antiserum was produced against synthesized peptide derived from human BST1. AA range:71-120
Specificity	BST-1 Polyclonal Antibody detects endogenous levels of BST-1 protein.
Formulation	Liquid in PBS containing 50% glycerol, 0.5% BSA and 0.02% sodium azide.
Storage	Store at -20°C. Avoid repeated freeze-thaw cycles.
Protein Name	ADP-ribosyl cyclase 2
Gene Name	BST1
Cellular localization	Cell membrane; Lipid-anchor, GPI-anchor.
Purification	The antibody was affinity-purified from rabbit antiserum by affinity-chromatography using epitope-specific immunogen.
Clonality	Polyclonal
Concentration	1 mg/ml
Observed band	34kD
Human Gene ID	683
Human Swiss-Prot Number	Q10588
Alternative Names	BST1; ADP-ribosyl cyclase 2; Bone marrow stromal antigen 1; BST-1; Cyclic ADP-ribose hydrolase 2; cADPr hydrolase 2; CD antigen CD157
Background	Bone marrow stromal cell antigen-1 is a stromal cell line-derived glycosylphosphatidylinositol-anchored molecule that facilitates pre-B-cell growth. The deduced amino acid sequence exhibits 33% similarity with CD38. BST1 expression is enhanced in bone marrow stromal cell lines derived from



patients with rheumatoid arthritis. The polyclonal B-cell abnormalities in rheumatoid arthritis may be, at least in part, attributed to BST1 overexpression in the stromal cell population. [provided by RefSeq, Jul 2008],

Western Blot analysis of various cells using BST-1
Polyclonal Antibody



Western blot analysis of lysates from COS7 and Jurkat cells, using BST1 Antibody. The lane on the right is blocked with the synthesized peptide.

