



Brp44L rabbit pAb

Cat No.:ES1793

For research use only

Overview

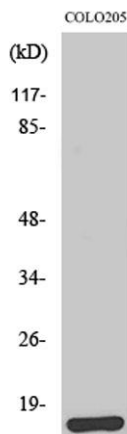
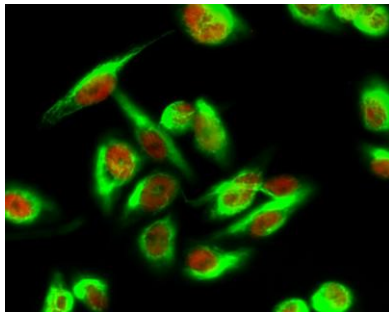
Product Name	Brp44L rabbit pAb
Host species	Rabbit
Applications	WB;IHC;IF;ELISA
Species Cross-Reactivity	Human;Mouse;Rat
Recommended dilutions	Western Blot: 1/500 - 1/2000. Immunohistochemistry: 1/100 - 1/300. Immunofluorescence: 1/200 - 1/1000. ELISA: 1/20000. Not yet tested in other applications.
Immunogen	The antiserum was produced against synthesized peptide derived from human BRP44L. AA range:11-60
Specificity	Brp44L Polyclonal Antibody detects endogenous levels of Brp44L protein.
Formulation	Liquid in PBS containing 50% glycerol, 0.5% BSA and 0.02% sodium azide.
Storage	Store at -20°C. Avoid repeated freeze-thaw cycles.
Protein Name	Mitochondrial pyruvate carrier 1
Gene Name	MPC1
Cellular localization	Mitochondrion inner membrane ; Multi-pass membrane protein .
Purification	The antibody was affinity-purified from rabbit antiserum by affinity-chromatography using epitope-specific immunogen.
Clonality	Polyclonal
Concentration	1 mg/ml
Observed band	12kD
Human Gene ID	51660
Human Swiss-Prot Number	Q9Y5U8
Alternative Names	MPC1; BRP44L; CGI-129; HSPC040; PNAS-115; Mitochondrial pyruvate carrier 1; Brain protein 44-like protein
Background	The protein encoded by this gene is part of an MPC1/MPC2 heterodimer that is responsible for





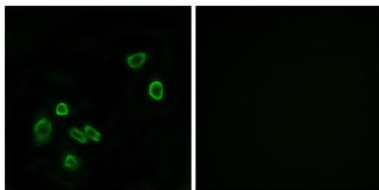
transporting pyruvate into mitochondria. The encoded protein is found in the inner mitochondrial membrane. Defects in this gene are a cause of mitochondrial pyruvate carrier deficiency. Several transcript variants, some protein coding and one non-protein coding, have been found for this gene. [provided by RefSeq, Aug 2012],

Immunofluorescence analysis of Hela cell. 1, Brp44L Polyclonal Antibody (green) was diluted at 1:200 (4° overnight). (red) was diluted at 1:200 (4° overnight). 2, Goat Anti Rabbit Alexa Fluor 488 Catalog: RS3211 was diluted at 1:1000 (room temperature, 50min).



Western Blot analysis of various cells using Brp44L Polyclonal Antibody

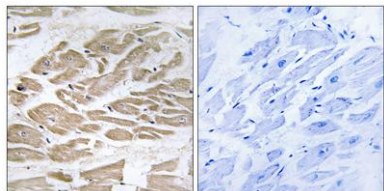
Immunofluorescence analysis of A549 cells, using BRP44L Antibody. The picture on the right is blocked with the synthesized peptide.





ELK Biotechnology

Immunohistochemistry analysis of paraffin-embedded human heart tissue, using BRP44L Antibody. The picture on the right is blocked with the synthesized peptide.



+86-27-59760950

ELKbio@ELKbiotech.com

www.elkbiotech.com

23-2, No.388 Gaoxin 2nd Road, Wuhan East Lake Hi-tech Development Zone, Hubei, P.R.C