



Brp16 rabbit pAb

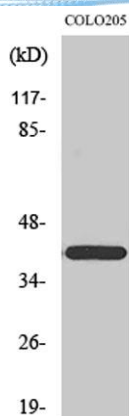
Cat No.:ES1792

For research use only

Overview

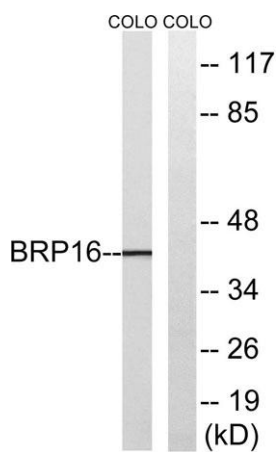
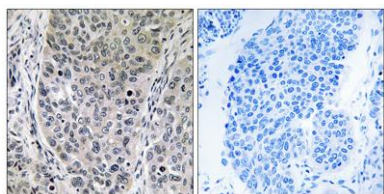
| | |
|---------------------------------|--|
| Product Name | Brp16 rabbit pAb |
| Host species | Rabbit |
| Applications | WB;IHC;IF;ELISA |
| Species Cross-Reactivity | Human;Mouse;Rat |
| Recommended dilutions | Western Blot: 1/500 - 1/2000. Immunohistochemistry: 1/100 - 1/300. ELISA: 1/40000. Not yet tested in other applications. |
| Immunogen | The antiserum was produced against synthesized peptide derived from human BRP16. AA range:251-300 |
| Specificity | Brp16 Polyclonal Antibody detects endogenous levels of Brp16 protein. |
| Formulation | Liquid in PBS containing 50% glycerol, 0.5% BSA and 0.02% sodium azide. |
| Storage | Store at -20°C. Avoid repeated freeze-thaw cycles. |
| Protein Name | Protein FAM203A |
| Gene Name | FAM203A |
| Cellular localization | |
| Purification | The antibody was affinity-purified from rabbit antiserum by affinity-chromatography using epitope-specific immunogen. |
| Clonality | Polyclonal |
| Concentration | 1 mg/ml |
| Observed band | 40kD |
| Human Gene ID | 51236 |
| Human Swiss-Prot Number | Q9BTY7 |
| Alternative Names | FAM203A; BRP16; C8orf30A; Protein FAM203A; Brain protein 16 |
| Background | similarity:Belongs to the UPF0570 (BRP16/HGH1) family., |





Western Blot analysis of various cells using Brp16 Polyclonal Antibody

Immunohistochemistry analysis of paraffin-embedded human lung carcinoma tissue, using BRP16 Antibody. The picture on the right is blocked with the synthesized peptide.



Western blot analysis of lysates from COLO cells, using BRP16 Antibody. The lane on the right is blocked with the synthesized peptide.

