



BET3 rabbit pAb

Cat No.:ES1768

For research use only

Overview

Product Name	BET3 rabbit pAb
Host species	Rabbit
Applications	WB;IHC;IF;ELISA
Species Cross-Reactivity	Human;Mouse;Rat
Recommended dilutions	Western Blot: 1/500 - 1/2000. Immunohistochemistry: 1/100 - 1/300. ELISA: 1/5000. Not yet tested in other applications.
Immunogen	The antiserum was produced against synthesized peptide derived from human TRAPPC3. AA range:131-180
Specificity	BET3 Polyclonal Antibody detects endogenous levels of BET3 protein.
Formulation	Liquid in PBS containing 50% glycerol, 0.5% BSA and 0.02% sodium azide.
Storage	Store at -20°C. Avoid repeated freeze-thaw cycles.
Protein Name	Trafficking protein particle complex subunit 3
Gene Name	TRAPPC3
Cellular localization	Golgi apparatus, cis-Golgi network . Endoplasmic reticulum .
Purification	The antibody was affinity-purified from rabbit antiserum by affinity-chromatography using epitope-specific immunogen.
Clonality	Polyclonal
Concentration	1 mg/ml
Observed band	22kD
Human Gene ID	27095
Human Swiss-Prot Number	O43617
Alternative Names	TRAPPC3; BET3; CDABP0066; Trafficking protein particle complex subunit 3; BET3 homolog
Background	trafficking protein particle complex 3(TRAPPC3) Homo sapiens This gene encodes a component of the trafficking protein particle complex, which tethers transport vesicles to the cis-Golgi

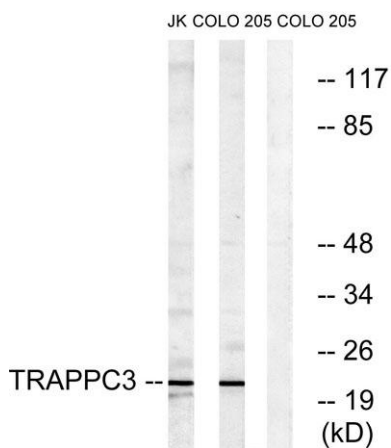




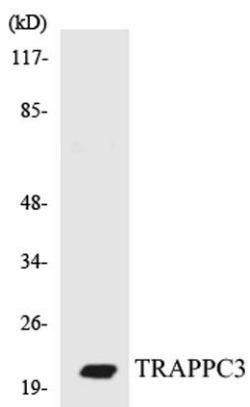
membrane. The encoded protein participates in the regulation of transport from the endoplasmic reticulum to the Golgi apparatus. Alternative splicing results in multiple transcript variants. [provided by RefSeq, Aug 2012],



Western Blot analysis of various cells using BET3 Polyclonal Antibody diluted at 1:500



Western blot analysis of lysates from COLO and Jurkat cells, using TRAPPC3 Antibody. The lane on the right is blocked with the synthesized peptide.

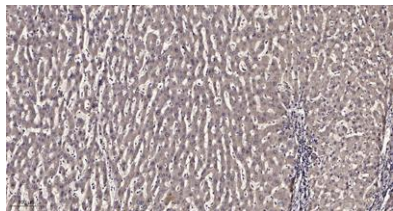


Western blot analysis of the lysates from COLO205 cells using TRAPPC3 antibody.





ELK Biotechnology



Immunohistochemical analysis of paraffin-embedded human liver cancer. 1, Antibody was diluted at 1:200(4° overnight). 2, Tris-EDTA,pH9.0 was used for antigen retrieval. 3,Secondary antibody was diluted at 1:200(room temperature, 45min).



+86-27-59760950

ELKbio@ELKbiotech.com

www.elkbiotech.com

23-2, No.388 Gaoxin 2nd Road,Wuhan East Lake Hi-tech Development Zone, Hubei , P.R.C