

# AW-1 rabbit pAb

Cat No.:ES1738

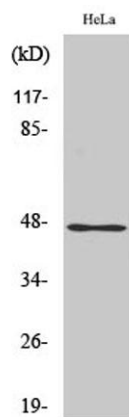
For research use only

## Overview

Product Name	AW-1 rabbit pAb
Host species	Rabbit
Applications	WB;IHC;IF;ELISA
Species Cross-Reactivity	Human;Rat;Mouse;
Recommended dilutions	Western Blot: 1/500 - 1/2000. Immunohistochemistry: 1/100 - 1/300. Immunofluorescence: 1/200 - 1/1000. ELISA: 1/10000. Not yet tested in other applications.
Immunogen	The antiserum was produced against synthesized peptide derived from human ZNF174. AA range:201-250
Specificity	AW-1 Polyclonal Antibody detects endogenous levels of AW-1 protein.
Formulation	Liquid in PBS containing 50% glycerol, 0.5% BSA and 0.02% sodium azide.
Storage	Store at -20°C. Avoid repeated freeze-thaw cycles.
Protein Name	Zinc finger protein 174
Gene Name	ZNF174
Cellular localization	Nucleus.
Purification	The antibody was affinity-purified from rabbit antiserum by affinity-chromatography using epitope-specific immunogen.
Clonality	Polyclonal
Concentration	1 mg/ml
Observed band	46kD
Human Gene ID	7727
Human Swiss-Prot Number	Q15697
Alternative Names	ZNF174; ZSCAN8; Zinc finger protein 174; AW-1; Zinc finger and SCAN domain-containing protein 8
Background	function:Transcriptional repressor.,similarity:Belongs to the krueppel C2H2-type zinc-finger protein family.,similarity:Contains 1 SCAN box domain.,similarity:Contains 3 C2H2-type zinc

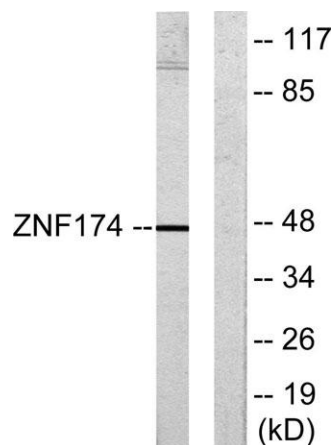
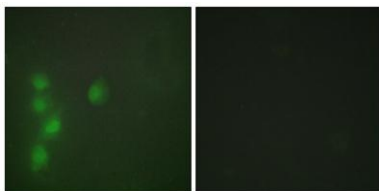


fingers.,subunit:Homodimer.,tissue  
specificity:Expressed in a variety of organs, but most  
strongly in adult testis and ovary followed by small  
intestine, colon, prostate, thymus, spleen, pancreas,  
skeletal muscle, heart, brain and kidney. Also  
expressed in umbilical vein endothelial cells,  
foreskin fibroblast and HEPG2 cells.,



Western Blot analysis of various cells using AW-1  
Polyclonal Antibody

Immunofluorescence analysis of HUVEC cells, using  
ZNF174 Antibody. The picture on the right is blocked with  
the synthesized peptide.

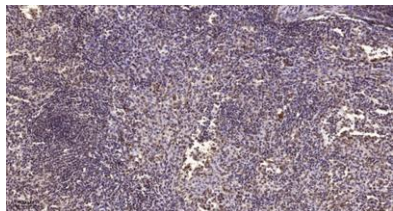


Western blot analysis of lysates from HeLa cells, using  
ZNF174 Antibody. The lane on the right is blocked with  
the synthesized peptide.





**ELK Biotechnology**



Immunohistochemical analysis of paraffin-embedded human spleen. 1, Tris-EDTA,pH9.0 was used for antigen retrieval. 2 Antibody was diluted at 1:200(4° overnight.3,Secondary antibody was diluted at 1:200(room temperature, 45min).



+86-27-59760950

[ELKbio@ELKbiotech.com](mailto:ELKbio@ELKbiotech.com)

[www.elkbiotech.com](http://www.elkbiotech.com)

23-2, No.388 Gaoxin 2nd Road,Wuhan East Lake Hi-tech Development Zone, Hubei , P.R.C