

ATP5I rabbit pAb

Cat No.:ES1729

For research use only

Overview

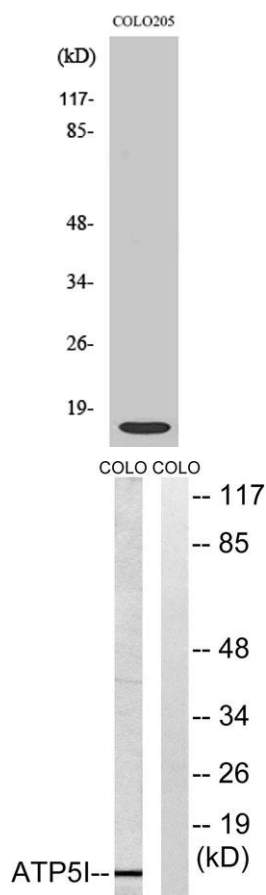
Product Name	ATP5I rabbit pAb
Host species	Rabbit
Applications	WB;IHC;IF;ELISA
Species Cross-Reactivity	Human;Rat;Mouse;
Recommended dilutions	Western Blot: 1/500 - 1/2000. Immunohistochemistry: 1/100 - 1/300. ELISA: 1/20000. Not yet tested in other applications.
Immunogen	The antiserum was produced against synthesized peptide derived from human ATP5I. AA range:20-69
Specificity	ATP5I Polyclonal Antibody detects endogenous levels of ATP5I protein.
Formulation	Liquid in PBS containing 50% glycerol, 0.5% BSA and 0.02% sodium azide.
Storage	Store at -20°C. Avoid repeated freeze-thaw cycles.
Protein Name	ATP synthase subunit e mitochondrial
Gene Name	ATP5I
Cellular localization	Mitochondrion. Mitochondrion inner membrane.
Purification	The antibody was affinity-purified from rabbit antiserum by affinity-chromatography using epitope-specific immunogen.
Clonality	Polyclonal
Concentration	1 mg/ml
Observed band	8kD
Human Gene ID	521
Human Swiss-Prot Number	P56385
Alternative Names	ATP5I; ATP5K; ATP synthase subunit e; mitochondrial; ATPase subunit e
Background	Mitochondrial ATP synthase catalyzes ATP synthesis, utilizing an electrochemical gradient of protons across the inner membrane during oxidative phosphorylation. It is composed of two linked multi-subunit complexes: the soluble catalytic core, F1, and the membrane-spanning component, Fo,



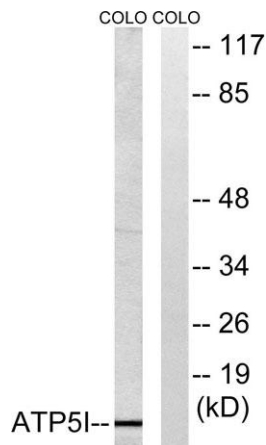


which comprises the proton channel. The F1 complex consists of 5 different subunits (alpha, beta, gamma, delta, and epsilon) assembled in a ratio of 3 alpha, 3 beta, and a single representative of the other 3. The Fo seems to have nine subunits (a, b, c, d, e, f, g, F6 and 8). This gene encodes the e subunit of the Fo complex. Alternative splicing results in multiple transcript variants.[provided by RefSeq, Jun 2010],

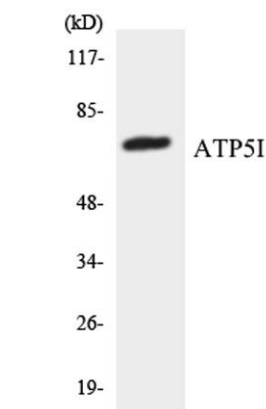
Western Blot analysis of various cells using ATP5I Polyclonal Antibody



Western blot analysis of lysates from COLO cells, using ATP5I Antibody. The lane on the right is blocked with the synthesized peptide.

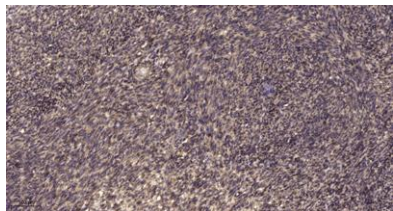


Western blot analysis of the lysates from 293 cells using ATP5I antibody.





ELK Biotechnology



Immunohistochemical analysis of paraffin-embedded human uterus. 1, Antibody was diluted at 1:200(4° overnight). 2, Tris-EDTA,pH9.0 was used for antigen retrieval. 3,Secondary antibody was diluted at 1:200(room temperature, 45min).



+86-27-59760950

ELKbio@ELKbiotech.com

www.elkbiotech.com

23-2, No.388 Gaoxin 2nd Road,Wuhan East Lake Hi-tech Development Zone, Hubei , P.R.C